

Si-APD-Array SAH1L12-Series

Description

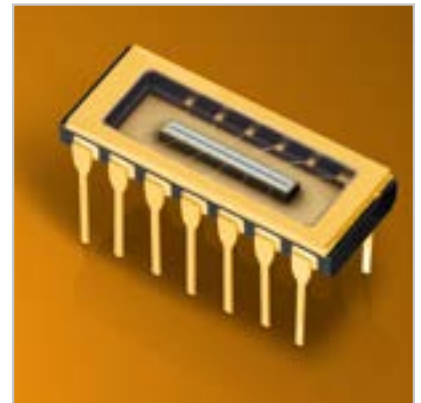
The SAH1L12-Series is a linear Si-APD-array with 12 elements in a 14-pin-DIL package with protective window. Responsivity is optimised for 850 nm.

Features

- 12 element APD array
- Very narrow gap
- High quantum efficiency
- Low noise, high speed
- 620 μm x 190 μm active area per element
- Wide operating temperature range
- Low crosstalk

Applications

- Rangefinding
- LIDAR ACC
- Laser scanner

**Germany & Other Countries**

Laser Components Germany GmbH
Tel: +49 8142 2864 - 0
Fax: +49 8142 2864 - 11
info@lasercomponents.com
www.lasercomponents.com

France

Laser Components S.A.S.
Tel: +33 1 39 59 52 25
Fax: +33 1 39 59 53 50
info@lasercomponents.fr
www.lasercomponents.fr

United Kingdom

Laser Components (UK) Ltd.
Tel: +44 1245 491 499
Fax: +44 1245 491 801
info@lasercomponents.co.uk
www.lasercomponents.co.uk

Nordic Countries

Laser Components Nordic AB
Tel: +46 31 703 71 73
Fax: +46 31 703 71 01
info@lasercomponents.se
www.lasercomponents.se

USA

Laser Components USA, Inc.
Tel: +1 603 821 - 7040
Fax: +1 603 821 - 7041
info@laser-components.com
www.laser-components.com

Electro-Optical Characteristics, $T_a = 25^\circ\text{C}$

Parameter	Condition	Min	Typ	Max	Unit
# of elements			12		
Active area			620 × 190		μm
Gap			40		μm
Dark current I_d	$M = 100, \lambda = 905 \text{ nm}$, per element		4	10	nA
Capacitance, C	$M = 100$, per element		3		pF
Responsivity, R_l	$M = 100, \lambda = 905 \text{ nm}$	40	50		A/W
Rise time, t_r	$M = 100, \lambda = 905 \text{ nm}, R_l = 50 \text{ Ohms}$		1000		psec
Breakdown voltage, V_{BR}	$I_R = 10 \mu\text{A}$	80	150	200	V
Temperature coefficient	$I_R = 10 \mu\text{A}$		0.5		V/K
Crosstalk	$\lambda = 905 \text{ nm}$		50		dB
Dark current uniformity	$M = 100$		±5	±20	%
Photo current uniformity	$M = 100, \lambda = 905 \text{ nm}$		±5	±20	%

Absolute Maximum Ratings

Parameter		Min	Max	Unit
Storage temperature		-55	100	°C
Operating temperature		-40	85	
Soldering (15s)			260	
Reverse current (Peak)	CW		0.200	mA
	1 s Pulse		1	
Forward current (Avg)	CW		10	
	1 s Pulse		50	
Max total power dissipation			60	mW

Curves

Fig. 1: Spectral Response

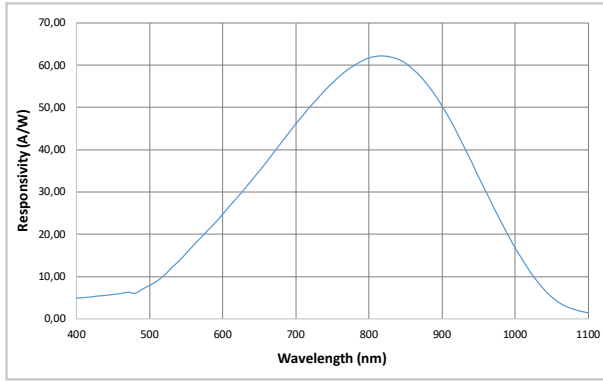


Fig. 2: Quantum Efficiency

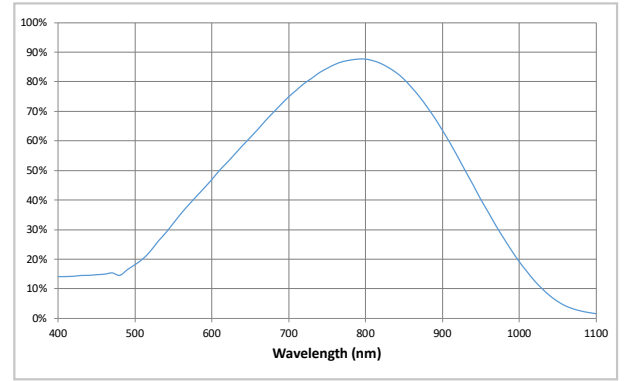


Fig. 3: Multiplication

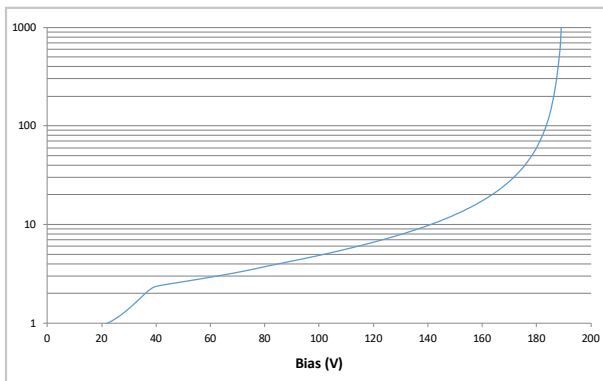


Fig. 4: Current vs. Reverse Voltage

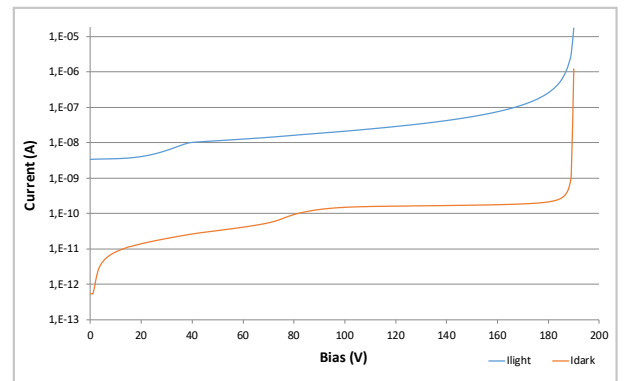


Fig. 5: Capacitance vs. Reverse Voltage

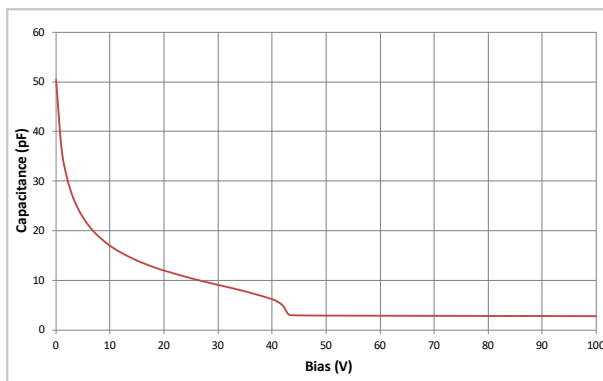
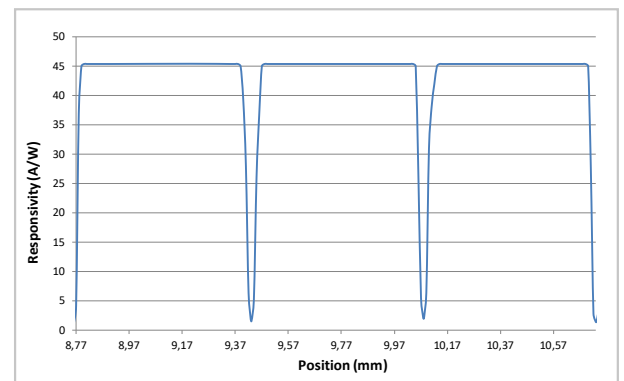
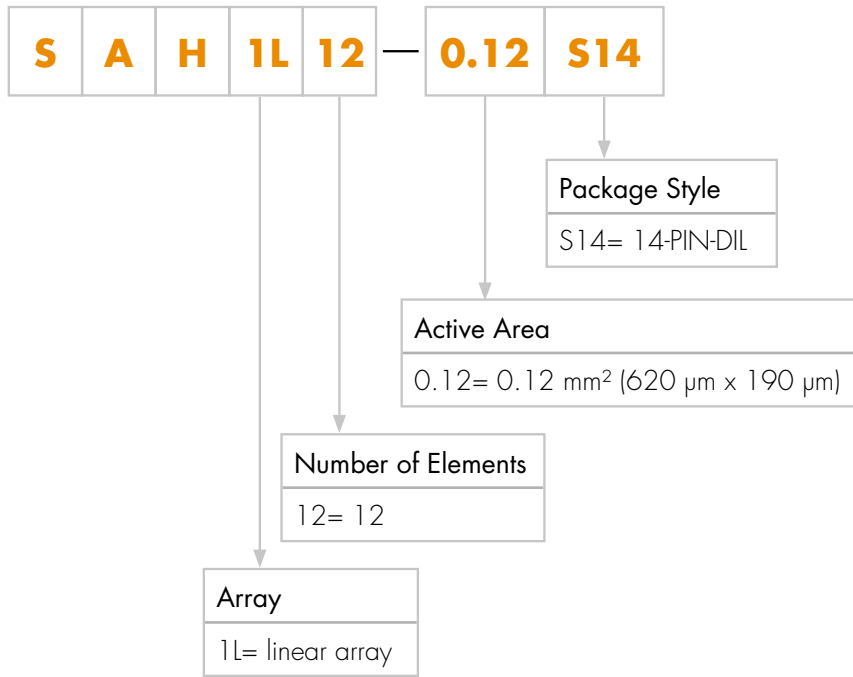


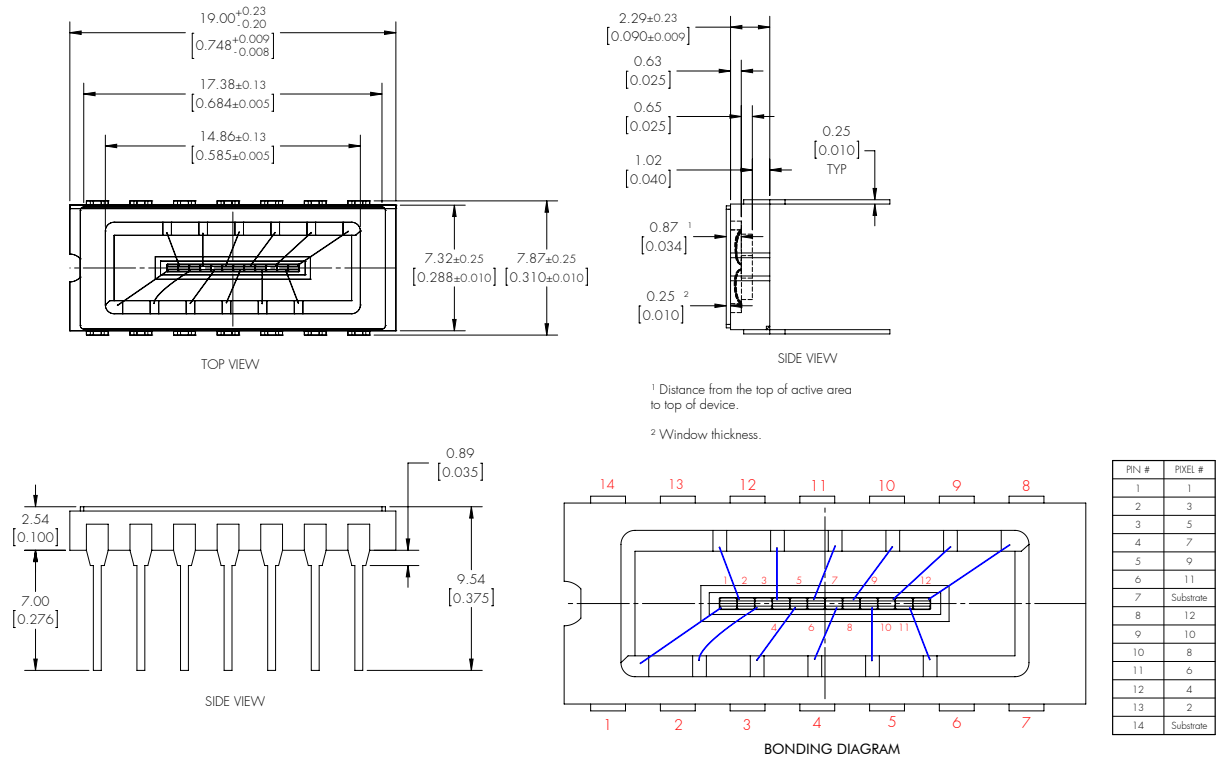
Fig. 6: Spot Scan



Product Number Designation



Package Drawings



Product Changes

LASER COMPONENTS reserves the right to make changes to the product(s) or information contained herein without notice.

No liability is assumed as a result of their use or application.

Ordering Information

Products can be ordered directly from LASER COMPONENTS or its representatives. For a complete listing of representatives, visit our website at www.lasercomponents.com

Custom designed products are available on request.