

# FiberTrace 2 and FiberCable 2

Post-Processing PC Software for Fast and Efficient Viewing, Editing, Analyzing, and Reporting of Optical Fiber Test Data



## Manage Your Optical Fiber Network More Effectively

Documenting every aspect of an optical fiber network is critical. Good records and reports will provide ongoing direction for future network maintenance and development such as rerouting or upgrades. A well-documented fiber/cable plant will be much easier to troubleshoot and will ensure that future upgrades go smoothly.

## Document Your Work for Customer Acceptance

Acceptance testing and documentation will minimize future operational risks and assure customer satisfaction. In addition, acceptance documentation enables acknowledgement that the project has been completed as the client originally requested—protecting the supplier.

## Create Accurate and Updated Documentation

FiberTrace 2 and FiberCable 2 post-processing PC software tools are designed for installers, network operators, and service providers willing to edit and analyze optical fiber test results offline as well as generate accurate and updated documentation.



### T-BERD®/MTS Optical Test Platforms

FiberTrace 2 and FiberCable 2 are powerful post-processing software tools for Viavi Solutions T-BERD/MTS platform optical fiber test data. For decades, the T-BERD/MTS product line has built a solid and trusted worldwide reputation based on cutting-edge test technology.

### Key Benefits

- Improve productivity by reducing data post-processing times from hours to minutes
  - Batch-processing/macro functions automatically perform repetitive actions and save results to a series of files
- Enable in-depth, offline analysis of field-acquired data
  - Manage multiple OTDR traces with automated, bidirectional alignment and analysis
- Generate professional reports
  - Complete the test process twice as fast and more reliably than with any standard OTDR
  - Certify the work with onboard pdf report generation

### Key Applications

- View T-BERD/MTS platform test results including insertion loss (IL), return loss (ORL), chromatic and polarization-mode dispersion (CD/PMD), attenuation profile (AP), OTDR, optical spectrum analyzer (OSA), FiberComplete™, and I-PMD™ test data
- Edit and analyze multiple measurement files
- Generate acceptance test reports

## Two Versions, One Powerful Tool

Viavi optical data post-processing software is available in two versions.

- FiberTrace 2 lets users view, edit, analyze, and print in a professional format any optical test data acquired in the field with Viavi T-BERD/MTS platforms. It is ideal for small fiber jobs.
- FiberCable 2 adds the ability to generate high-fiber-count cable OTDR acceptance reports and fiber-characterization reports combining various test results in a single document. It is ideal for the analysis and characterization of large groups of fibers (for example, an entire cable or large jobs with multiple spans and large fiber counts).

### Discover Viavi Post-Processing Software at No Cost

FiberTrace 2 Viewer is a free version of FiberTrace 2 which lets you view and print T-BERD/MTS platform IL, ORL, OTDR, CD, PMD, AP, and OSA test data.

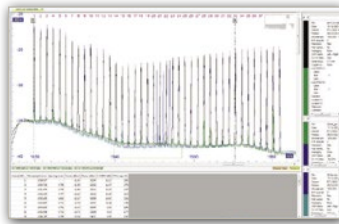
To download FiberTrace 2 Viewer, go to [www.updatemyunit.net](http://www.updatemyunit.net) or ask your Viavi representative.

## From Simple Visualization to Advanced Report Generation

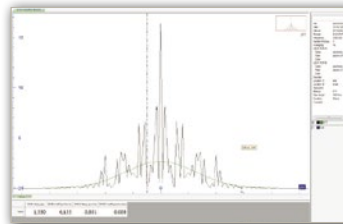
View

### User-friendly offline data visualization

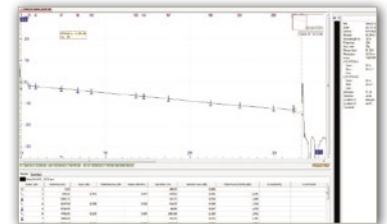
Whether you want to review recent data collected from the field or compare it with previously stored data to check a fiber's behavior and potential degradations, FiberTrace 2 and FiberCable 2 let you display on a Windows PC or laptop any optical test data acquired with T-BERD/MTS platforms regardless of the acquisition date.



OSA data view



PMD data view



OTDR data view

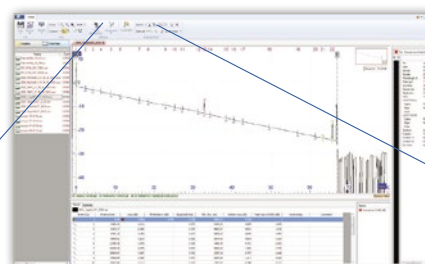
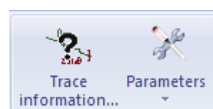
Edit

### Easy batch documentation and customization

Measurement data collected in the field might need to be documented with additional comments or project-management information. FiberTrace 2 and FiberCable 2 let you edit files offline and perform extra processing.

#### For Any Results

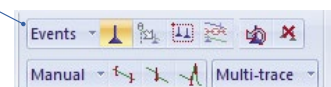
- Adjust measurement or calculation parameters
- Add/modify link and job information
- Set pass/fail alarm thresholds



File editor

#### For OTDR Results

- Add/remove events
- Perform manual measurements



Thanks to an ingenious macro function, repetitive actions (simple or complex) can be performed automatically with a single click on an unlimited number of files.

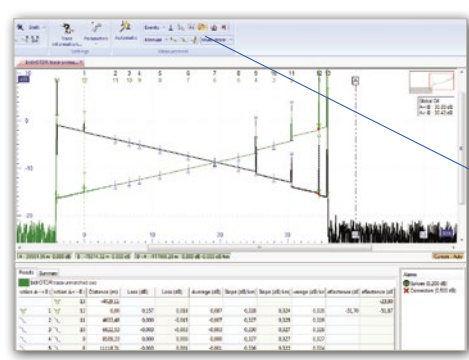


**Powerful data post-analysis**

The analysis of a large amount of data acquired in the field can become quite complicated and time consuming. FiberTrace 2 and FiberCable 2 automate data management and analysis tasks, making it easy to perform new measurements, interpret results, and highlight important information such as events reaching thresholds.

**In-Depth Bidirectional OTDR Analysis**

Bidirectional OTDR measurement is the only way to get accurate splice-loss values. However, measuring fiber from both ends can generate inconsistent OTDR data. FiberTrace 2 and FiberCable 2 enable in-depth and fast analysis of bidirectional OTDR data that helps generate homogeneous results.



Bidirectional OTDR Analysis

Link 2 events  
Distribute events

**Results Analysis**

- Multitrace analysis
- Automatic or manual measurement
- Bend evaluation
- Pass/fail status

**Bidirectional OTDR Analysis in Two Steps**

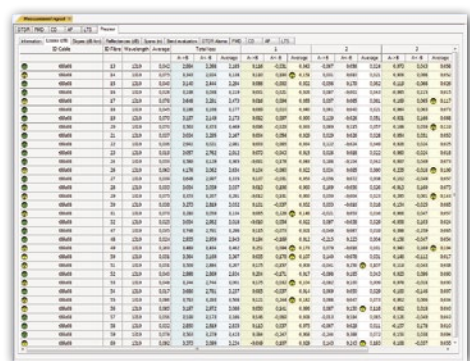
- Link two events to align A→B and B→A traces
- Distribute all events available on A→B and B→A traces to adjust event locations in both directions

**Fast Bidirectional OTDR Batch Analysis**

Bidirectional OTDR measurement requires technicians to perform OTDR tests from both ends of a link at different wavelengths. With high-fiber-count cables, this means generating a huge number of files with multiple wavelengths and in multiple directions. FiberCable 2 automatically organizes, combines both-end results, and provides a bi-directional analysis status for each fiber in the entire fiber cable.

**Bidirectional OTDR Batch Analysis**

- Manages an unlimited number of fibers
- Template file generation
- Out-of-range values information report
- Data compilation



Cable	Wavelength	Average	A-B	A-B	Average	A-B	A-B	Average	A-B	A-B	Average
000001	1310	0.250	0.250	0.250	0.250	0.250	0.250	0.250	0.250	0.250	0.250
000002	1310	0.250	0.250	0.250	0.250	0.250	0.250	0.250	0.250	0.250	0.250
000003	1310	0.250	0.250	0.250	0.250	0.250	0.250	0.250	0.250	0.250	0.250
000004	1310	0.250	0.250	0.250	0.250	0.250	0.250	0.250	0.250	0.250	0.250
000005	1310	0.250	0.250	0.250	0.250	0.250	0.250	0.250	0.250	0.250	0.250
000006	1310	0.250	0.250	0.250	0.250	0.250	0.250	0.250	0.250	0.250	0.250
000007	1310	0.250	0.250	0.250	0.250	0.250	0.250	0.250	0.250	0.250	0.250
000008	1310	0.250	0.250	0.250	0.250	0.250	0.250	0.250	0.250	0.250	0.250
000009	1310	0.250	0.250	0.250	0.250	0.250	0.250	0.250	0.250	0.250	0.250
000010	1310	0.250	0.250	0.250	0.250	0.250	0.250	0.250	0.250	0.250	0.250
000011	1310	0.250	0.250	0.250	0.250	0.250	0.250	0.250	0.250	0.250	0.250
000012	1310	0.250	0.250	0.250	0.250	0.250	0.250	0.250	0.250	0.250	0.250
000013	1310	0.250	0.250	0.250	0.250	0.250	0.250	0.250	0.250	0.250	0.250
000014	1310	0.250	0.250	0.250	0.250	0.250	0.250	0.250	0.250	0.250	0.250
000015	1310	0.250	0.250	0.250	0.250	0.250	0.250	0.250	0.250	0.250	0.250
000016	1310	0.250	0.250	0.250	0.250	0.250	0.250	0.250	0.250	0.250	0.250
000017	1310	0.250	0.250	0.250	0.250	0.250	0.250	0.250	0.250	0.250	0.250
000018	1310	0.250	0.250	0.250	0.250	0.250	0.250	0.250	0.250	0.250	0.250
000019	1310	0.250	0.250	0.250	0.250	0.250	0.250	0.250	0.250	0.250	0.250
000020	1310	0.250	0.250	0.250	0.250	0.250	0.250	0.250	0.250	0.250	0.250

Report preview

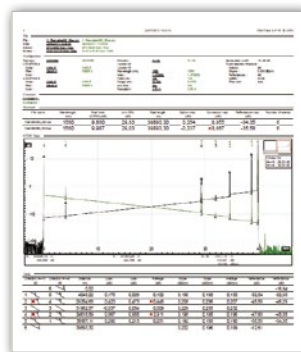


## Comprehensive Report Generation

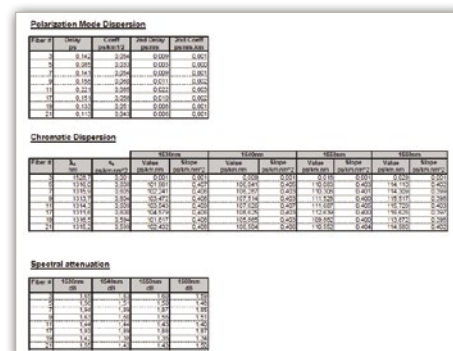
Fiber optic cable plant documentation allows better planning for future network upgrades and is essential during troubleshooting to help technicians find faults and fix them in a timely manner. FiberTrace 2 and FiberCable 2 easily generate compelling reports to record field data in a professional format. FiberCable 2 also adds the ability to generate high-fiber-count cable OTDR acceptance reports and fiber-characterization reports combining various test results in a single document (for example, OTDR, IL, ORL, PMD, and CD).

### Advanced Reporting

- Configurable printouts
- HTML, Excel, or PDF file format
- Individual or combined reports
- High-fiber-count cable acceptance reports
- Fiber-characterization reports



OTDR report



Fiber characterization report

## Maximize the Value of Your Investment

With each new FiberTrace 2 and FiberCable 2 software license you acquire, you get free access to upgrades and technical support. To download upgrades to your licensed FiberTrace 2 and FiberCable 2 software, go to [www.updatemyunit.net](http://www.updatemyunit.net) or ask your Viavi representative.

## Ordering Information

Description	Part Number
FiberTrace 2 software	EOFS100
FiberTrace 2 software, 5-license package	EOFS1005L
FiberTrace 2 software, site license	EOFS100SL
FiberCable 2 software	EOFS200
FiberCable 2 software, 5-license package	EOFS2005L
FiberCable 2 software, site license	EOFS200SL

© 2015 Viavi Solutions, Inc.  
Product specifications and descriptions in this document are subject to change without notice.  
fibertracecable-pb-fop-tm-ae  
30173472 900 0613