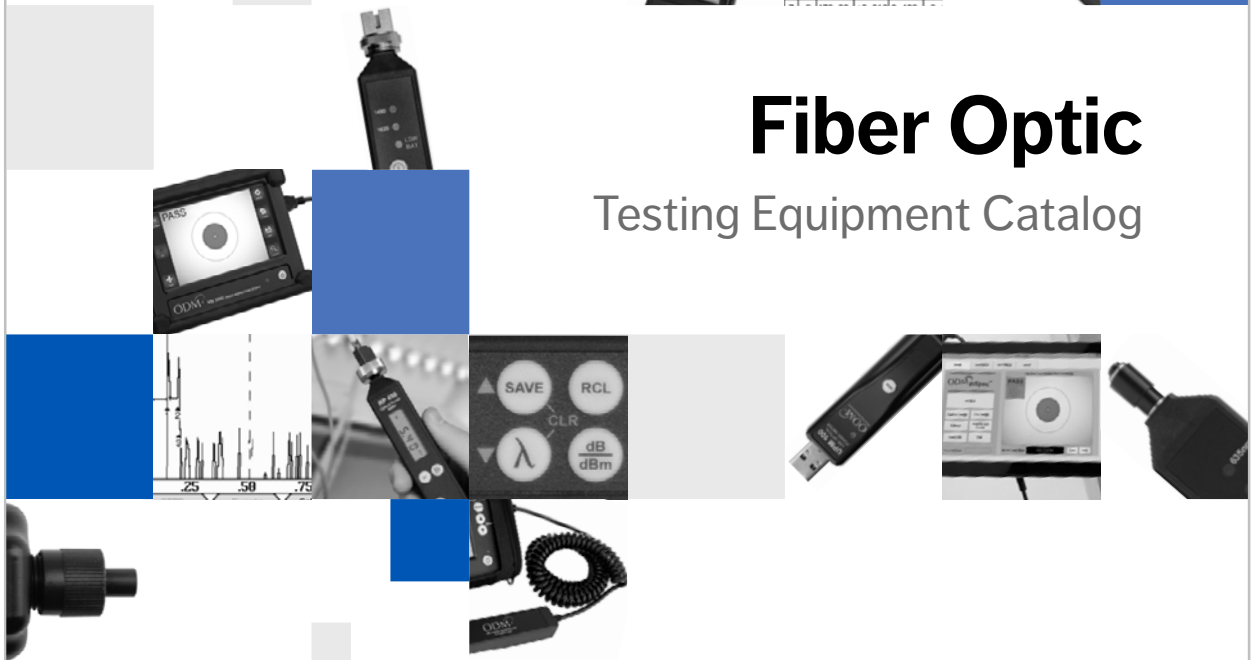


ODMTM
A RIPLEY® BRAND



Fiber Optic Testing Equipment Catalog



 **RIPLEY**[®]

CATV ■ Fiber Optic ■ Telecom ■ Wireless ■ Satellite ■ Power Transmission ■ Power Distribution



Tools Made for Your Trade

At Ripley Tools, we are a quality product design and manufacturing company founded and based in the U.S. for over 80 years. With a full line of wire and cable preparation tools, we are proud to serve technicians and installers across a variety of global markets including in the CATV, telecommunications, electrical, wireless, fiber optic and utility industries. Our trusted ODM™ line of optical test and inspection equipment featured in this catalog is known for delivering innovative and scalable test solutions that are both easy to use and affordable. **All ODM™ test and measurement tools are covered by a 2-year warranty.**

Ripley® Brands Promote Job Safety, Efficiency & Reliability

ODM™

Our test and measurement brand provides innovative, user-friendly and economical optical test and inspection equipment, as well as superior technical support.

Miller®

A global brand of choice by installers and technicians for precision fiber optic cable preparation tools made in close collaboration with fiber manufacturers.

Cablematic®

Durable, professional-grade tools designed to prepare coaxial trunk and distribution, drop and messengered cables.

UtilityTool®

Tools designed to increase user safety and reduce costs by achieving quick, accurate cable splices and unions in utility and power transmission applications.

World-Class Customer Service & Technical Support

Our knowledgeable customer support team is available to answer product questions and provide unparalleled support.



Download:

Find instruction guides online at www.odm-inc.com

Free inSpec™ Software

Our innovative software packages provide simple and repeatable fiber optic testing solutions. Download our inSpec™ and OpTest software for free from www.odm-inc.com. The inSpec™ app for smartphones and tablets is available for download on Apple iTunes and Google Play.

ODM inSpec™



Fiber Optic Testing Equipment

Optical Power Meters



UPM 100

USB Power Meter

- Connects to PCs & Tablets via USB
- Transmit Live dB & dBm Readings for Storage or Closeout Reporting
- Set Reference / Zero Functionality
- Incoming 2 kHz Signal Audible Alert
- Compatible with All Connector Styles
- Single Mode or Multi-Mode Testing



RP 450

Handheld Optical Power Meter



- NIST Traceable Measurements
- Set Reference / Zero Functionality
- Incoming 2 kHz Signal Audible Alert
- Compatible with All Connector Styles
- Single Mode or Multi-Mode Testing
- Long Battery Life



RP 460

Handheld Optical Power Meter



- Transfer Readings from Device to Computer via USB
- Stores Over 4,000 Readings
- NIST Traceable Measurements
- Set Reference / Zero Functionality
- Incoming 2 kHz Signal Audible Alert
- Compatible with All Connector Styles
- Single Mode or Multi-Mode Testing

Optical Power Meter Comparison Chart

MODEL / PART #	UPM 100		RP 450		RP 460	
	UPM 100-02	UPM 100-04	RP 450-02	RP 450-04	RP 460-02	RP 460-04
DETECTOR TYPE	InGaAs	Filtered InGaAs	InGaAs	Filtered InGaAs	InGaAs	Filtered InGaAs
MEASUREMENT RANGE	+6 to -70 dBm	+23 to -45 dBm	+6 to -70 dBm	+23 to -45 dBm	+6 to -70 dBm	+23 to -45 dBm
WAVELENGTH RANGE	850 nm to 1650 nm		850 nm to 1650 nm		850 nm to 1650 nm	
SELECTED WAVELENGTH	850 / 1300 / 1310 / 1490 / 1550 / 1611 / 1625 nm		850 / 1300 / 1310 / 1490 / 1550 / 1611 / 1625 nm		850 / 1300 / 1310 / 1490 / 1550 / 1611 / 1625 nm	
RESOLUTION	0.01 dB		0.01 dB		0.01 dB	
ABSOLUTE ACCURACY	± 0.25 dB		± 0.25 dB		± 0.25 dB	
OPTICAL INTERFACE	Universal 2.5 mm (Other Adapters Available)		Universal 2.5 mm (Other Adapters Available)		Universal 2.5 mm (Other Adapters Available)	
DISPLAY SCREEN	None (Connect to PC or Tablets)		Built-In LCD		Built-In LCD	
TOPE IDENTIFICATION	2 kHz Incoming Signal - Audible Alert		2 kHz Incoming Signal - Audible Alert		2 kHz Incoming Signal - Audible Alert	
STORAGE	External Storage in inSpec™ or OpTest App		✘		4,000+ Measurements	
DATA TRANSFER	USB 2.0		✘		Mini USB (Live Readings or Data Dump)	
POWER ON	Powered via USB		Push Button ON / Auto-Off		Push Button ON / Auto-Off	
DIMENSIONS	3.75" x 0.75" x 0.75" (9.5 x 1.9 x 1.9 cm)		6.1" x 0.94" x 0.75" (15.5 x 2.38 x 1.9 cm)		6.1" x 0.94" x 0.75" (15.5 x 2.38 x 1.9 cm)	
WEIGHT	0.8 oz (22.68 g)		3.0 oz (85.4 g)		3.0 oz (85.4 g)	

Power Meter Adapters

PART #	DESCRIPTION
AC 020	2.5 mm Universal Adapter
AC 021	1.25 mm Universal Adapter

PART #	DESCRIPTION
AC 026	SC Adapter
AC 027	ST Adapter

PART #	DESCRIPTION
AC 028	FC Adapter
AC 029	LC Adapter

PART #	DESCRIPTION
AC 126	SC/APC Adapter

Fiber Optic Testing Equipment

Optical Light Sources



DLS 350

Handheld Dual LED Light Source



- 850 nm & 1300 nm Wavelengths
- NIST Traceable Measurements
- 2 kHz Tone Output
- Universal Connector Interface
Compatible with SC, FC, ST, & LC
- Long Battery Life



DLS 355

Handheld Dual Laser Light Source



- 1310 nm & 1550 nm Wavelengths
- NIST Traceable Measurements
- 2 kHz Tone Output
- Universal Connector Interface
Compatible with SC, FC, ST, & LC
- Long Battery Life



DLS 360

Handheld Dual Laser Light Source



- 1490 nm & 1625 nm Wavelengths
- NIST Traceable Measurements
- 2 kHz Tone Output
- Universal Connector Interface
Compatible with SC, FC, ST, & LC
- Long Battery Life

Optical Light Source Comparison Chart

MODEL / PART #	DLS 350	DLS 355	DLS 360
WAVELENGTHS	850 nm & 1300 nm	1310 nm & 1550 nm	1490 nm & 1625 nm
OUTPUT POWER	-22 dBm	-5 dBm	-5 dBm
OUTPUT STABILITY	± 0.05 dB (1 Hour) ± 0.03 dB Long-Term (15 Min. Warm-Up)	± 0.05 dB (1 Hour) ± 0.03 dB Long-Term (15 Min. Warm-Up)	± 0.05 dB (1 Hour) ± 0.03 dB Long-Term (15 Min. Warm-Up)
SPECTRAL WIDTH	40 nm / 120 nm	5 nm / 5 nm	5 nm / 5 nm
OPTICAL INTERFACE	Universal Connector (SC / FC / ST / LC)	Universal Connector (SC / FC / ST / LC)	Universal Connector (SC / FC / ST / LC)
tone output	2 kHz	2 kHz	2 kHz
LASER CLASS	x	Class 1 (FDA 21 CFR 1040, 11)	Class 1 (FDA 21 CFR 1040, 11)
POWER	Push Button ON / Auto-Off*	Push Button ON / Auto-Off*	Push Button ON / Auto-Off*
BATTERY	CR2	CR2	CR2
OPERATING TEMP.	-10° to +50° C	-10° to +50° C	-10° to +50° C
STORAGE TEMP.	-30° to +60° C	-30° to +60° C	-30° to +60° C
DIMENSIONS	6.1" x 0.94" x 0.75" (15.5 x 2.38 x 1.9 cm)	6.1" x 0.94" x 0.75" (15.5 x 2.38 x 1.9 cm)	6.1" x 0.94" x 0.75" (15.5 x 2.38 x 1.9 cm)
WEIGHT	3 oz (85.4 g)	3 oz (85.4 g)	3 oz (85.4 g)

Optical Light Source Adapters

PART #	DESCRIPTION
AC 022B	SC Adapter

PART #	DESCRIPTION
AC 023B	FC Adapter

PART #	DESCRIPTION
AC 024B	ST Adapter

PART #	DESCRIPTION
AC 025B	LC Adapter

Fiber Optic Testing Equipment

Inspection Scopes



VIS 300



Manual Field Inspection Scope

- Unique External Focus Mechanism
- 3.5" (8.9 cm) LCD Display
- Interchangeable Adapter Tips
- Ideal for Field-Viewing or PC-Compatible for Saving Images



VIS 300C



Automated Field Inspection Scope

- Automated Analysis Compliant with IEC 61300-3-35 Standards
- 5" (12.7 cm) Multi-Touch LCD Display
- Interchangeable Adapter Tips
- Test Result Sharing via Wi-Fi or USB Cable to PC Connection
- Expansive Storage & Instant Reports with Custom Parameters



VIS 400



High-Definition Inspection Scope

- Unique External Focus & Enhanced Magnification for Clear HD Images
- Automated Analysis Compliant with IEC 61300-3-35 Standards
- Interchangeable Adapter Tips

Inspection Scope Comparison Chart

MODEL / PART #	VIS 300		VIS 300C	VIS 400
	VIS 300B	VIS 300B-USB		
ANALYSIS TYPE	Manual	Manual	Manual / Automated	Manual / Automated
INSPECTION SYSTEM	Field Viewing	Field Viewing / inSpec™	inSpec™ On-Board	inSpec™ for Windows, iOS & Android
USB CONNECTION	✗	USB 2.0	USB 2.0 Type A	USB 2.0
FIELD OF VIEW (FOV)	630 µm x 440 µm		600 µm x 640 µm	860 µm x 640 µm
RESOLUTION	¾ µm		< 1 µm	< 1 µm
LIGHTING TECHNIQUE	Coaxial		Coaxial	Coaxial
INCLUDED ADAPTERS	1.25 mm Universal & LC Bulkhead		1.25 / 2.5 mm Universal & LC / SC Bulkhead	1.25 / 2.5 mm Universal & LC / SC Bulkhead
SCREEN SIZE	3.5" (8.9 cm) LCD		5" (12.7 cm) Multi-Touch LCD	✗
FOCUS SYSTEM	ODM Proprietary External Focus		ODM Proprietary External Focus	ODM Proprietary External Focus
STORAGE	inSpec™ External Storage		16 GB (60,000 Images)	inSpec™ External Storage
BATTERY TYPE	Lithium Ion		Lithium Ion	✗
BATTERY LIFE	8 to 10 Hours (Continuous)		4 to 5 Hours (Continuous)	✗
BATTERY CHARGE TIME	3 Hours		2 Hours	✗
OPERATING TEMP.	0° to +50° C		0° to +50° C	✗
STORAGE TEMP.	-40° to +70° C		-40° to +70° C	✗
MONITOR DIMENSIONS	4.75" x 3.5" x 1.25" (12.07 x 8.89 x 3.175 cm)		5.5" x 5.75" x 2.25" (13.97 x 14.61 x 5.715 cm)	✗
PROBE DIMENSIONS	7" x 1" x 0.75" (17.78 x 2.54 x 1.9 cm)		7" x 1" x 0.75" (17.78 x 2.54 x 1.9 cm)	7" x 1" x 0.75" (17.78 x 2.54 x 1.9 cm)
WEIGHT	1.2 lb (0.54 kg)		1.8 lb (0.82 kg)	5.6 oz (160 g)

Inspection Tip Adapters

PART #	DESCRIPTION
AC 040B	SC
AC 041B	SC / APC
AC 109B	SC 60° Angle
AC 042B	FC
AC 043B	FC / APC

PART #	DESCRIPTION
AC 104B	FC 60° Angle
AC 044B	LC
AC 045B	LC / APC
AC 107B	LC 60° Angle
AC 051B	OptiTap

PART #	DESCRIPTION
AC 046B	ST
AC 175	MPO / APC
AC 176	MPO / UPC
AC 048B	1.25 mm Universal
AC 049B	2.5 Universal

PART #	DESCRIPTION
AC 114B	1.25 mm Universal HR
AC 115B	2.5 mm Universal APC
AC 116B	1.25 mm Universal APC

Fiber Optic Testing Equipment

All-In-One Inspection & Test Sets



VIS 300C-PM-02-V

Automated Fiber Test Platform



- Portable Testing Device with Inspection Scope & Built-In Optical Power Meter & VFL
- Automated Analysis Compliant with IEC 61300-3-35 Standards
- 5" (12.7 cm) Multi-Touch LCD Display
- Test Result Sharing via Wi-Fi or USB Cable to PC Connection
- Expansive Storage & Instant Reports with Custom Parameters



VIS 300C-PM-04-V

Automated Fiber Test Platform



- Equipped with Filtered InGaAs Detector for Measuring Higher Powered Light Sources
- Portable Testing Device with Inspection Scope & Built-In High-Power OPM & VFL
- Automated Analysis Compliant with IEC 61300-3-35 Standards
- 5" (12.7 cm) Multi-Touch LCD Display
- Test Result Sharing via Wi-Fi or USB Cable to PC Connection
- Expansive Storage & Instant Reports with Custom Parameters

Automated Fiber Test Platform Comparison Chart

MODEL / PART #		VIS 300C-PM-02-V	VIS 300C-PM-04-V
POWER METER	MEASUREMENT RANGE	+6 to -70 dBm	+23 to -45 dBm
	DETECTOR TYPE	InGaAs	Filtered InGaAs
	CALIBRATED WAVELENGTHS	850 / 1300 / 1310 / 1490 / 1550 / 1611 / 1625 nm	850 / 1300 / 1310 / 1490 / 1550 / 1611 / 1625 nm
	RESOLUTION	0.01 dB	0.01 dB
	OPTICAL INTERFACE	2.5 mm Universal (Adapters Available)	2.5 mm Universal (Adapters Available)
VFL	WAVELENGTH	635 nm	635 nm
	OUTPUT POWER	1 mW - FDA 2 / IEC 2	1 mW - FDA 2 / IEC 2
	POWER TOGGLE	On-Screen Button	On-Screen Button
INSPECTION SCOPE	ANALYSIS TYPE	Manual / Automated	Manual / Automated
	FIELD OF VIEW (FOV)	860 μm x 640 μm	860 μm x 640 μm
	INSPECTION SCOPE RESOLUTION	<1 μm	<1 μm
	LIGHTING TECHNIQUE	Coaxial	Coaxial
	INCLUDED ADAPTERS	1.25 mm / 2.5 mm Universal & LC / SC Bulkhead	1.25 mm / 2.5 mm Universal & LC / SC Bulkhead
MONITOR / SYSTEM	SCREEN SIZE	5" (12.7 cm) Multi-Touch LCD	5" (12.7 cm) Multi-Touch LCD
	STORAGE	16 GB (60,000 Images)	16 GB (60,000 Images)
	BATTERY TYPE	Lithium Ion	Lithium Ion
	BATTERY LIFE	4 to 5 Hours (Continuous)	4 to 5 Hours (Continuous)
	BATTERY CHARGE TIME	2 Hours	2 Hours
	OPERATING TEMP.	0° to +50° C	0° to +50° C
	STORAGE TEMP.	-40° to +70° C	-40° to +70° C
	DIMENSIONS	5.5" x 5.75" x 2.25" (13.97 x 14.61 x 5.715 cm)	5.5" x 5.75" x 2.25" (13.97 x 14.61 x 5.715 cm)
	WEIGHT	1.8 lb (0.82 kg)	1.8 lb (0.82 kg)

Fiber Optic Testing Equipment

Fiber Identifiers



LFI 110

Live Fiber Identifier Accessory

- Easily Integrates with RP 450 or RP 460 Optical Power Meters & Detects Modulated Tone From ODM Light Sources
- Accommodates 250 µm Bare Fiber to 3 mm Jacketed Fiber
- Provides In-Service Testing on Single Mode Networks
- Eliminates Placing the Active Channel in an Alarm Condition



TTK 210

Basic Trace & Tone Test Kit



- Detachable Assembly Conveniently Combines an Optical Power Meter with a Live Fiber Identifier
- Accommodates 250 µm Bare Fiber to 3 mm Jacketed Fiber
- NIST Traceable Measurements
- Set Reference / Zero Functionality
- Single Mode or Multi-Mode Testing
- Compatible with All Connector Styles
- Includes Hard Carry Case & SC to SC Patch Cord



VF 610

Visual Fault Locator



- High-Visibility & High-Output Red Laser
- Compact & Rugged Design for Field or Laboratory Use
- Provides 2 Hz or Continuous Wave Modes of Operation
- 2.5 mm Universal Output Connector (SC, ST, or FC)

LFI 110 / TTK 210 Comparison Chart

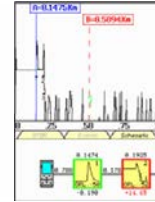
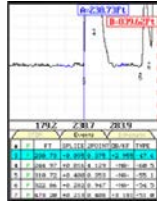
MODEL / PART #		LFI 110	TTK 210
POWER METER	DETECTOR TYPE	×	InGaAs or Filtered InGaAs
	MEASUREMENT RANGE	×	+6 to -70 dBm or +23 to -45 dBm
	WAVELENGTH RANGE	×	850 nm to 1650 nm
	SELECTED WAVELENGTH	×	850 / 1300 / 1310 / 1490 / 1550 / 1611 / 1625 nm
	CONNECTOR TYPES	×	All Connectors
	RESOLUTION	×	0.01 dB
	ABSOLUTE ACCURACY	×	± 0.25 dB
	OPTICAL INTERFACE	×	Universal 2.5 mm (Other Adapters Available)
FIBER IDENTIF.	NETWORK CONFIGURATION	Single Mode Long Haul, CO to CO or FTTX	Single Mode Long Haul, CO to CO or FTTX
	INDUCED LOSS (SMF 28)	< 1.5 dB @ 1550 nm	< 1.5 dB @ 1550 nm
	ABSOLUTE CORE ACCURACY (SMF28e)	± 2 dB Within Measurement Range	± 2 dB Within Measurement Range
MONITOR / SYSTEM	DISPLAY SCREEN	×	Built-In LCD
	tone IDENTIFICATION	2 kHz Incoming Signal - Audible Alert	2 kHz Incoming Signal - Audible Alert
	POWER ON	×	Push Button ON / Auto-Off
	DIMENSIONS	4" x 1.5" x 1.5" (10 x 1.25 x 1.25 cm)	6.1" x 1.5" x 1.5" (15.5 x 1.25 x 1.25 cm)
	WEIGHT	2.0 oz (56.7 g)	5.0 oz (141.7 g)

VF 610 Specifications

LASER WAVELENGTH	635 nm
OUTPUT POWER	1 mW - FDA 1 / IEC 2
MODULATION	2 Hz
POWER ON	ON / OFF Power Button
BATTERY TYPE	3.0V CR2
BATTERY LIFE	1,000 Operations
LOW BATTERY ALERT	LED Indicator
OPERATING TEMP.	-10° to +55° C
STORAGE TEMP.	-30° to +0° C
DIMENSIONS	6.1" x 0.94" x 0.75" (15.5 x 2.38 x 1.9 cm)
WEIGHT	3.0 oz (85.4 g)

Fiber Optic Testing Equipment

OTDRs



OTR 500

Optical Time Domain Reflectometer

- Available in SM (1310/1550) or MM (850/1300) Configurations
- Event Table with PASS / FAIL Analysis
- Performs Calculations Automatically with Bi-Directional Averaging
- Bluetooth Compatible with Android Smartphones & Tablets
- Short Event Dead Zone is Ideal for Short-Link Installations
- Easily Integrates with ODM Inspection Probes, OPMs & VFLs

OTR 700

Optical Time Domain Reflectometer

- Available in a Wide Range of Outputs Including SM Only, MM Only, Combination SM / MM, Single or CWDM Wavelength Ports & More
- Schematic View of Fiber Link for Quick & Simple Trace Analysis, As Well As Event Table with PASS / FAIL Analysis
- Performs Calculations Automatically with Bi-Directional Averaging
- Bluetooth Compatible with Android Smartphones & Tablets
- Short Event Dead Zone is Ideal for Short-Link Installations
- Easily Integrates with ODM Inspection Probes, OPMs & VFLs

OTDR Comparison Chart

MODEL / PART #	OTR 500	OTR 700
WAVELENGTH	850 / 1300 / 1310 / 1550 nm (± 20 nm)	850 / 1300 / 1310 / 1550 nm (± 20 nm)*
DYNAMIC RANGE	27/26 dB MM to 32/30 dB SM	27/26 dB MM to 36/35 dB SM
PULSE WIDTH	20 to 10,000 ns	5 to 20,000 ns
UNITS OF MEASUREMENT	km / kf / mi	km / kf / mi
EVENT DEAD ZONE	2 m	1 m
ATTENUATION DEAD ZONE	5 m	4 m
RESOLUTION	0.25 to 64 m	0.125 to 32 m
DISTANCE UNCERTAINTY	± (0.75 + 0.005% x Distance + Sampling Resolution)	± (0.75 + 0.005% x Distance + Sampling Resolution)
FULL SCALE DISTANCE RANGE	1 to 64 km MM / 1 to 240 km SM	1 to 64 km MM / 1 to 240 km SM
REAL-TIME REFRESH RATE	4 Hz (Typical)	2 Hz (Typical)
GROUP INDEX OF REFRACTION (GIR)	1.024 - 2.048	1.024 - 2.048
LINEARITY	± 0.05 dB/dB	± 0.05 dB/dB
INTERNAL MEMORY CAPACITY	1,000 Traces	1,000 Traces
BATTERY SUPPLY / CHARGER	Universal	Universal
BATTERY LIFE	6 Hours	6 Hours
COMMUNICATIONS PORTS	USB / Bluetooth	USB / Bluetooth
CONNECTOR TYPES	FC / ST / SC (Interchangeable)	FC / ST / SC (Interchangeable)
OPERATING TEMP.	-10° to +50° C	-10° to +50° C
STORAGE TEMP.	-20° to +60° C	-20° to +60° C
DIMENSIONS (W/O RUBBER BOOT)	7.62" x 3.88" x 1.56" (19.4 x 9.9 x 4 cm)	7.75" x 4.5" x 2.25" (19.7 x 11.4 x 5.7 cm)
WEIGHT	1.6 lb (0.73 kg)	2.0 lb (0.91 kg)

Launch / Receive Cables & Accessories

PART #	DESCRIPTION
AC 490	SM FC-LC 150 m Launch Ring / Cable
AC 495	MM FC-LC 150 m Launch Ring / Cable
AC 513	Single Mode Cable, LC-LC 20 m

PART #	DESCRIPTION
AC 514	Single Mode Cable, FC-LC 20 m
AC 630	Non-Reflective Terminator, LC/UPC RL ≤ -55 dB
AC 160	SC OTDR Launch Adapter

PART #	DESCRIPTION
AC 161	ST OTDR Launch Adapter
AC 162	FC OTDR Launch Adapter

Fiber Optic Testing Equipment

General Fiber Optic Test Kits



TTK 500

SM / MM Test & Inspection Kit



- USB Connectivity & ODM Software Package Provide Simple Plug & Play Image Storage for Closeout Reports
- Comprehensive PASS / FAIL Analysis Compliant with IEC 61300-3-35 Industry Standards
- Optical Power Meter Can Archive & Live-Stream Data via USB
- Two Included Light Sources Provide Standard Wavelengths for Testing Loss in Single Mode & Multi-Mode Systems
- Includes All Patch Cords & Adapters Compatible with SC & LC Connector Systems
- Complete Dry & Dry/Wet Cleaning System Ensures Removal of Even the Toughest Endface Contaminants
- Includes Materials for Up to 1,000 Connector Cleanings



TTK 720

Compact SM Loopback Test & Inspection Kit



- Compact Test Platform Provides Fast & Simple Testing Out in the Field
- Automated & Comprehensive PASS / FAIL Analysis Compliant with IEC 61300-3-35 Industry Standards
- Share Closeout Reports From the Testing Device by Emailing Customers or Saving to Cloud Storage via Wi-Fi
- VIS 300C-PM-02-V Platform Provides Full Control to Customize Parameters for Fiber Endface Inspection, Insertion Loss & Visual Fault Location Tests
- HD Inspection Scope Features an Analysis Button, ODM's Unique External Focus Mechanism & Includes Inspection Tips
- Optical Power Meter with InGaAs Detector Provides dB Insertion Loss & dBm Power Level Results
- Integrated 635 nm Red Laser VFL Identifies Excessive Breaks & Bends in SM Fiber

Fiber Optic Test Kit Comparison Chart

MODEL / PART #	TTK 500	TTK 720
INSPECTION TYPE	Manual	Manual / Automated
dB LOSS	SM / MM	SM
OPTICAL POWER MEASUREMENT	RP 460-02 Optical Power Meter	Built-In
VISUAL FAULT LOCATOR	✗	Built-In
WI-FI ENABLED	✗	✓
KIT CONTENTS	VIS 300 USB Inspection Scope RP 460-02 Optical Power Meter DLS 355 Dual Laser Source DKS 350 Dual LED Source SM Test Jumpers MM Test Jumpers Cleaning Tools	VIS 300C-PM-02-V All-In-One Test Platform with On-Board InGaAs OPM & 635 nm VFL Red Laser DLS 355 Dual Laser Source SM Loopback Test Jumpers Cleaning Tools

Fiber Optic Testing Equipment

Accessories

Cleaning Kits & Tools

PART #	DESCRIPTION
CK 125	Cleaning Kit (Up to 750 Cleanings) with Lint-Free Wipes, Fiber Cleaning Liquid, 1.25 mm Swabs, 2.5 mm Swabs & Soft Padded Pouch
CK 128	Cleaning Kit (Up to 1,000 Cleanings) with Cube of Connector Cleaning Wipes, Lint-Free Wipes, Fiber Cleaning Liquid, 2.5 mm Swabs & Soft Padded Pouch
CK 132	Cleaning Kit (Up to 2,000 Cleanings) with 1.25 mm Click-Style Cleaner for LC & ODC Connectors, Lint-Free Wipes, Fiber Cleaning Liquid, 1.25 mm Swabs, 2.5 mm Swabs & Soft Padded Pouch
CK 250	Cleaning Kit (Up to 2,000 Cleanings) with Fiber Cleaning Solution, Wipes, 1.25 mm Swabs & 2.5 mm Swabs
AC 083	MTP / MPO Click-Style Bulkhead & Connector Cleaner (Configured for Flat Polished Multi-Mode & 8° Angled Single Mode MPO Ferrules)
AC 089	1.25 mm Click-Style Bulkhead & Connector Cleaner (Configured for ODC Pin & Socket, as well as LC Connectors & Adapters)
AC 094	1.25 mm Click-Style Cleaner for LC Connectors & Adapters Only
AC 099	2.5 mm Click-Style Cleaner for SC Connectors & Adapters Only
AC 090	1.25 mm Cleaning Swabs (100 Per Pack)
AC 091	2.5 mm Cleaning Swabs (100 Per Pack)
AC 092	Lint-Free Wipes & Fiber Cleaning Liquid
AC 093	Pen-Style Fiber Cleaning Liquid
AC 095	Cube of Connector Cleaning Wipes
AC 190	Cletope Cleaner, Type B, Blue Tape
AC 191	Refill Cassettes for Cletope Cleaner (6 Per Pack)

Instrument Carry Cases

PART #	DESCRIPTION
AC 010	Single Instrument Padded Pouch (Fits All Handheld Tools)
AC 011	Hard Case for Up to 4 Instruments
AC 012	Hard Case for LFI 110, VIS 300 Monitor, Probe, Adapter Tips & Charger
AC 014	Padded Pouch for Up to 4 Instruments & Connector Cleaning Kits
AC 015	Rugged Pelican-Style Hard Case for VIS 300/400 & TTK 500

Loopback Modules

PART #	DESCRIPTION
AC 4400	Loopback with Lanyard, Single Mode, SC Connector
AC 4500	Loopback with Lanyard, Single Mode, LC Connector
AC 4600	Loopback with Lanyard, Multi-Mode, SC Connector

Wavelength Filters for OPM

PART #	DESCRIPTION
AC 640	Filter for Bandpass Wavelengths Greater Than 1600 nm , SC / UPC
AC 641	Filter for Bandpass Wavelengths Greater Than 1600 nm , SC / APC
AC 642	Filter for Bandpass Wavelengths Less Than 1600 nm , SC / APC
AC 643	Filter for Notch Pass 1310 nm Wavelength Only , SC / APC
AC 644	Filter for Notch Pass 1490 nm Wavelength Only , SC / APC
AC 645	Filter for Notch Pass 1550 nm Wavelength Only , SC / APC
AC 646	Filter for Notch Pass 1611 nm Wavelength Only , SC / APC

Battery Accessories

PART #	DESCRIPTION
AC 300	CR2 Battery Kit (5 Per Pack) Compatible w/ All ODM Handheld Tools
AC 310	CR2 Battery Charger & 2 Rechargeable CR2 Batteries

Fiber Patch Cords & Miscellaneous Accessories

PART #	DESCRIPTION
AC 500	SC - LC, Single Mode, Simplex Cable, 1 Meter
AC 501	SC - SC, Single Mode, Simplex Cable, 1 Meter
AC 502	LC - LC, Single Mode, Simplex Cable, 1 Meter
AC 523	SC - LC to LC - LC Cable Duplex Clipped, Single Mode, 1 Meter
AC 530	SC Jumper to Samsung Pin, Single Mode, 1 Meter
AC 531	LC Jumper to Samsung Pin, Single Mode, 1 Meter
AC 533	SC - LC to LC - LC Cable Duplex Clipped, Multi-Mode, 1 Meter
AC 540	OptiTap to SC / APC, Single Mode, 1 Meter Cable
AC 550	SC / LC Cable, Multi-Mode, 50/125 Fiber, 1 Meter
AC 552	LC / LC Cable, Multi-Mode, 50/125 Fiber, 1 Meter
AC 600	SC - SC Bulkhead Simplex Adapter
AC 601	LC - LC Bulkhead Simplex Adapter
AC 602	LC - LC Bulkhead Duplex Adapter
AC 200-S	Torque Wrench for ODC 2
AC 870	AC Charger for VIS 300 Monitor

Fiber Optic Cable Preparation



A RIPLEY® BRAND

Fiber Optic Cutting & Stripping Tools

Please Refer to the Ripley® Broadband Catalog for Entire Product Lines



MA01 Series

Fiber Optic Stripper & Shear Kit

- Features a Nylon Pouch with Heavy Duty Belt Clip & Industrial Hook & Loop Closure
- CFS-3 Tri-Hole Strippers: Manufactured to Precise Tolerances to Accurately Remove the 1.6 to 3 mm Fiber Jacket, 600 to 900 Micron Buffer Coating & Standard 250 Micron Acrylate from Fiber Optic Cable
- KS-1 Kevlar® Shears: Durable, Lightweight & Ergonomic Shears Ideal for Cutting Kevlar® Strength Fibers & Other Materials

PART #	DIMENSIONS	WEIGHT
MA01-7001	9.75" x 3.25" (247.7 x 82.55 mm)	12 oz (340.2 g)



FTS Series

Fiber Optic Kevlar® Shears

- One-Step Precision Fiber Tube Scoring Tool
- Durable, Factory-Set Hardened Carbon Steel Blade Requires No Adjustments
- Color-Coded for Quick Identification

MODEL	PART #	BUFFER TUBE DIAMETERS	TUBE WALL THICKNESS	LENGTH	WEIGHT
FTS-005	80990	Up to 0.079" (Up to 2 mm)	0.005" - 0.010" (0.13 - 0.25 mm)	3.75" (95.53 mm)	1 oz (28 g)
FTS	80980	0.062" - 0.236" (1.6 - 6 mm)	0.010" - 0.020" (0.25 - 0.5 mm)		
FTS-035	80985	0.062" - 0.236" (1.6 - 6 mm)	0.039" - 0.051" (1 - 1.3 mm)		



FO-CF Series

Fiber Optic Center Feed Stripper

- Durable, Lightweight & Ergonomic Tool with Center Feed Design
- Precisely Longitudinally Strips the 900 Micron Buffer Coating Down to the 125 Micron Bare Fiber
- Convenient, Side-Mounted Stripper Blade Removes 1.6 to 3 mm Fiber Jackets

PART #	DIMENSIONS	WEIGHT
81400	1.17" x 2.19" x 4.08" (29.77 x 55.6 x 103.6 mm)	2.8 oz (79 g)



MSAT 16™ Series

Mid-Span Access Tool

- 16 Unique Settings Accommodate Buffer Tubes Ranging from 1 mm to 3 mm
- Convenient Built-In Sizing Channels Quickly Determine Proper Setting for a Wide Variety of Buffer Tubes
- Easy-to-Load Buffer Tube Channel Supports & Guides Tube Through Precision Shaving Operation

PART #	DIMENSIONS	WEIGHT
MB01-7000	1.875" x 2.75" x 2.25" (47.6 x 69.9 x 57.2 mm)	3.2 oz (90.7 g)



IET Series

Connector & Extraction Tool

- Spring-Loaded Design Engineered for Inserting & Extracting Fiber Optic Connectors in High-Density Patch Panels
- Compatible with LC & SC Simplex & Duplex Connectors; MU, MT-RJ & Similar Types

PART #	DIMENSIONS	WEIGHT
80860	8.75" x 2.75" x 0.75" (222.9 x 69.9 x 19.1 mm)	3.49 oz (99 g)



MSAT™ Series

All Access Kit

- For Buffer Tube Diameters from 0.039" to 0.118" (1 to 3 mm)
- **Kit Includes:** FO 103S Fiber Optic Stripper; KS-1 Fiber Optic Kevlar® Shears; RCS-114 Hard Cable Jacket Stripper; FTS Buffer Tube Scorer; MSAT™ 16 Mid-Span Access Tool & Hard Plastic Case with Foam Lining

PART #	DIMENSIONS	WEIGHT
MA03-7000	11.5" x 8.25" x 2.5" (292 x 210 x 63.5 mm)	2 lb (925.3 g)



LIT-RP-0003 REV. 00