

LCQ8505S5-N/M/P

AlGaAs Laser Diode

Ver.2 APR.2005

◆ OVERVIEW

LCQ8505S5 is a MOCVD grown 850nm band AlGaAs laser diode with quantum well structure. It's an attractive light source, with a typical light output power of 5mW for industrial optical module and sensor applications.

◆ APPLICATION

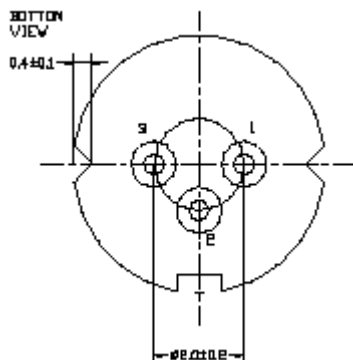
- Sensor
- Industrial Optical Module

◆ FEATURES

- Visible Light Output : $\lambda_p = 850 \text{ nm}$
- Optical Power Output : 5mW CW
- Package Type : TO-18 (5.6mm ϕ)
- Built-in Photo Diode for Monitoring Laser Diode

◆ ELECTRICAL CONNECTION

Bottom View



Pin Configuration

N	LD anode= PD cathode (Fig. 1)
M	LD cathode= PD cathode (Fig. 2)
P	LD cathode= PD anode (Fig. 3)

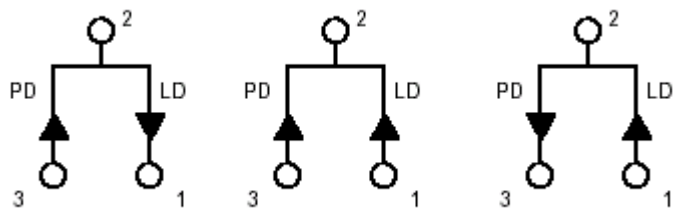


Fig. 1

LCQ8505S5-N

Fig. 2

LCQ8505S5-M

Fig. 3

LCQ8505S5-P

◆ **ABSOLUTE MAXIMUM RATING at Tc=25°C**

Items	Symbols	Values	Unit
Optical Output Power	P	7	mW
Laser Diode Reverse Voltage	V	2	V
Photo Diode Reverse Voltage	V	30	V
Operating Temperature	Topr	-10 ~ +60	°C
Storage Temperature	Tstg	-40 ~ +85	°C

◆ **ELECTRICAL and OPTICAL CHARACTERISTICS at Tc=25°C**

Items	Symbols	Min.	Typ.	Max.	Unit	Condition
Optical Output Power	Po	-	5	-	mW	-
Threshold Current	Ith	5	10	20	mA	-
Operating Current	Iop	15	20	30	mA	Po=5mW
Slope Efficiency	SE	0.4	0.7	0.9	mW/mA	2~5 mW
Operating Voltage	Vop	-	1.9	2.5	V	Po=5mW
Lasing Wavelength	λ_p	845	850	855	nm	Po=5mW
Beam Divergence	$\theta_{ }$	7	9	12	deg	Po=5mW
	θ_{\perp}	25	32	40	deg	Po=5mW
Beam Angle	$\Delta\theta_{ }$	-	-	± 2	deg	Po=5mW
	$\Delta\theta_{\perp}$	-	-	± 3	deg	Po=5mW
Monitor Current	Im	0.2	0.4	0.6	mA	Po=5mW
Astigmatism	As			15	μm	
Optical Distance	$\Delta X, \Delta Y, \Delta Z$	-	-	± 60	μm	

NOTICE : LCQ8505S5-N/M/P to be operated on APC

The above product specifications are subject to change without notice.

◆ PACKAGE DIMENSION

