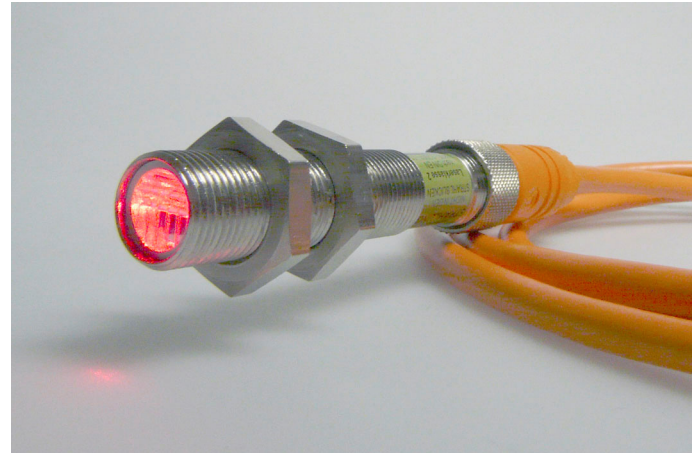


# Industrial Laser Modules ILM12 Series

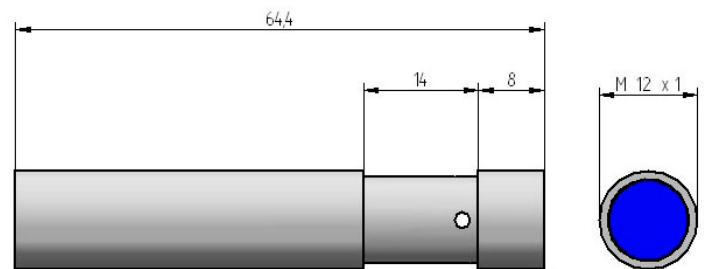
The ILM12 series laser modules were specifically developed for industrial applications. Thanks to their M12x1 external thread, these lasers, which come in industrial housings made of stainless steel, are easy to integrate. All lasers are operated with 8-30 VDC and can project either dots, lines, or cross hairs at 635 nm (bright red).



Connector and cable not included.

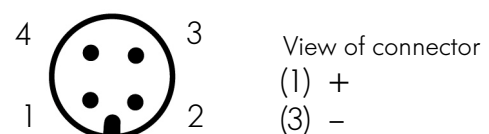
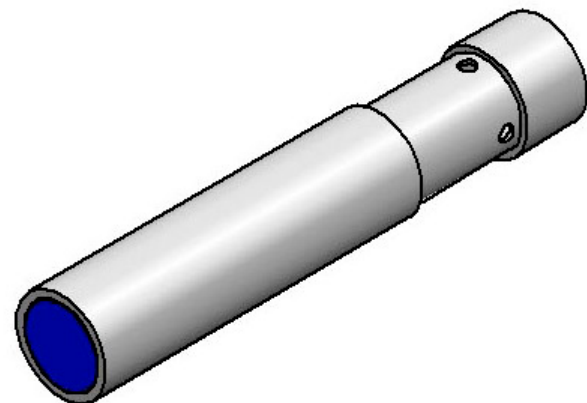
## FEATURES

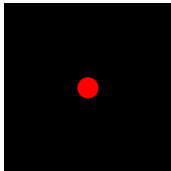

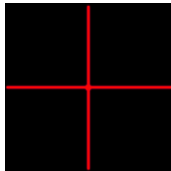
- Dot laser
- Line laser
- Cross-hair laser
- 635 nm (bright red)
- Eye-safe
- 24 VDC supply voltage
- M12 industrial housing and connection



## APPLICATIONS

- Positioning tasks
- Timber industry
- Metal industry
- Textile industry
- Image processing
- Automotive industry



	<b>Dot laser</b>	<b>Line laser</b>	<b>Cross-hair laser</b>
	ILM12-D-635-01	ILM12-L-YYY-635-03	ILM12-C-058-635-03
Model			
Wavelength	635 nm (bright red)		
Output power	1 mW	3 mW	3 mW
Laser class	2	2M	2M
Fan angle	NA	35°, 58°, 90°, 110° (replace YYY with fan angle)	2 x 58°
Working distance	Optimized for a distance of 1 m		
Beam pointing error	< 5 mrad		
Operating voltage	8 – 30 VDC		
Power consumption	approx. 50 mA		
Operating temperature	0 up to 50 °C		
Storage temperature	-10 up to 60 °C		
Housing	Stainless steel with thread M12x1, potential free		
Dimensions	64,4 mm x 12 mm (see drawing)		
Protection class	IP54		
Connection	M12, 4 pins (Pin1 +, Pin3 -)		
Accessories	Connector with 2 m cable		

