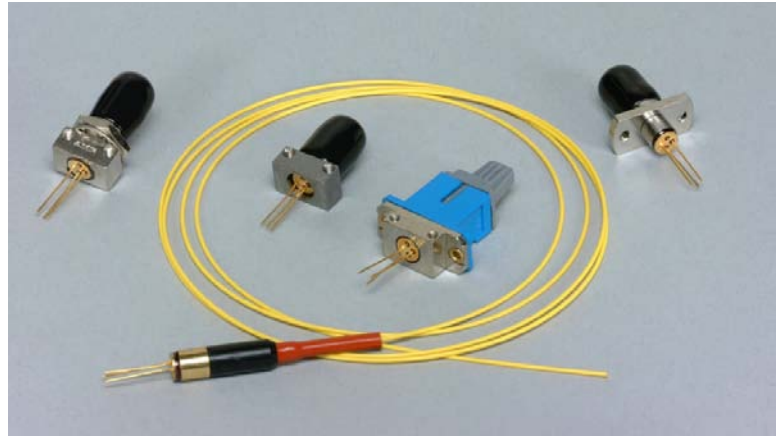




**PTIN15- Series PTIN1.2- Series Receivers for Fiber Optics
PTIN62- Series PTIN2.5- Series InGaAs PIN w/TIA**

InGaAs PIN TIA Receivers

PD-LD Inc. offers low noise, high responsivity InGaAs photo detectors paired with a transimpedance amplifiers (TIA) in convenient fiber coupled packages. These assemblies incorporate a 75 micron diameter active area detector that responds optimally to both 1310 and 1550 nm light sources. This PIN/Preamp combination delivers superior characteristics making them ideal for both digital and analog systems. Each module contains a TIA whose bandwidth is ideally suited to industry standard transmission speeds: 150 MHz, 450 MHz, 1.0 GHz and 2.5GHz. Most devices include automatic gain control (AGC), a feature that allows the circuit to operate with high optical input power without becoming saturated. AGC makes possible full dynamic range receivers, lessening the need to use attenuators within the cable plant. These modules are available with either bare or connectorized fiber pigtailed or in receptacle style housings suitable for board or panel mounting. These high reliability units are operational over industrial environmental conditions.



Applications

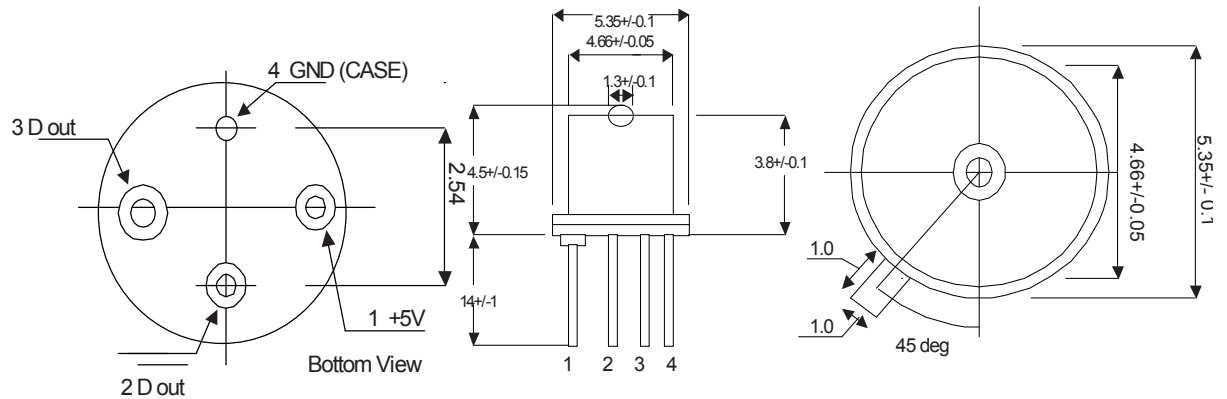
- **Networking**
10/100/1000 MB Ethernet
FDDI
ATM
- **Telecommunications**
SONET OC-3/OC-12/OC-24/
OC-48
SDH: STM1/STM3/STM6/
STM12

Features

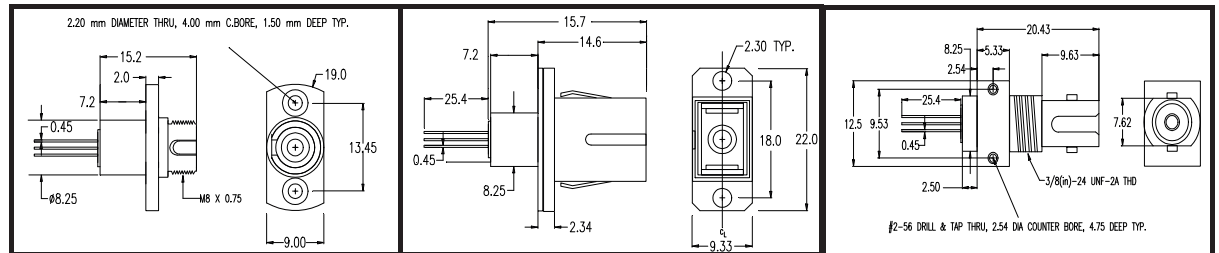
- IEEE 802.3 Performance
- Belcore TA983 Compliant
- ITU G.957 Compliant
- -40 to 85°C Operating Range
- Differential or Single Ended Output
- Operates with 3.3V or 5V Supply
- FC, ST, SC Receptacle Housing
- Pigtailed w/9/125 μm Fiber

Parameter	Units	Symbol	155 MHz		450 MHz		1100 MHz		2500 MHz	
			Min.	Max.	Min.	Max.	Min.	Max.	Min.	Typ.
Operating Wavelength	nm	Lambda	1100	1650	1100	1600	1100	1600	1100	1600
Differential Gain	V/mW	G	.17	220	0.2	24	0.2	24	26	
Analog Bandwidth (-3dB)	MHz	BW _e	120	175	450	—	800	1100	1600	2000
Rise and Fall Times	nsec	t _{r,f}	—	3.3	5.0	8.0	—	0.26	—	0.15
PowerSupply (3.3V available)	V	V _{cc}	4.5	5.5	4.5	5.5	4.5	5.5	4.5	5.5
Output offset Voltage	V	V _{os}	V _{cc} -3.5	V _{cc} -1.5	V _{cc} -3.5	V _{cc} -1.5	V _{cc} -3.5	V _{cc} -1.5	V _{cc} -3.5	V _{cc} -1.5
Differential Output Voltage	V	V _d	—	1	—	1.3	—	0.5	0.6	
Optical Sensitivity	dBm	S	—	-38 -36	—	-31.5 -29	—	-24 -22	—	-21 -18
Optical Saturation Power	dBm	P _{sat}	—	-3	—	-3	—	-3	—	-3
Output Resistance	ohm	R _{out}	30	65	50	65	30	65	48	60 72
Operating Current	mA	I _{cc}	—	35	—	50	—	50	—	47 57
Operating Temperature	degree	C	-40 to 85°C							
Storage Temperature	degree	C	-50 to 85°C							

PTIN15- Series PTIN1.2- Series Receivers for Fiber Optics
 PTIN62- Series PTIN2.5- Series InGaAs PIN w/TIA



InGaAs PIN Photodiode with TIA
 Pinout & Mechanical Dimensions (mm)



Ordering Information

PIN TIA Pigtails		PIN TIA Receptacles	
PTINDXXXFCCB-O-V-MM		PTINDXXXRRRF-O-V	
<p>T= PIN TIA IN= InGaAs Photodiode D = Device Identification Type See Table</p>			
<p>XXX= Bandwidth 155 Mhz 450 MHz 1.2 GHz 2.5 GHz</p>	<p>F = Fiber Type 1 = 9/125/900 SMF 2 = 50/125 MMF 3 = 62.5/125 MMF 9 = Supplied by cust</p>	<p>RRR = Receptacle FC1 = FC Panel Mount FC2 = FC Board Mount SC2 = SC Board/Panel Mount ST7 = ST Low Profile ST8 = ST High Profile</p>	<p>CC = Connector FA = FC/APC FC = FC PC SA = SC/APC SC = SC ST = ST OO = No Connector</p>

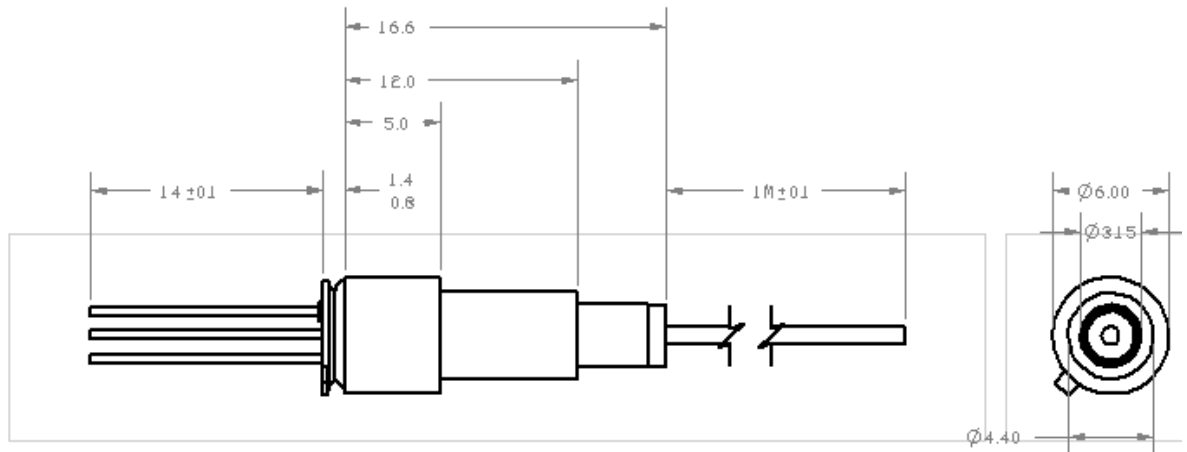
PTIN15- Series PTIN1.2- Series Receivers for Fiber Optics
 PTIN62- Series PTIN2.5- Series InGaAs PIN w/TIA

Ordering Information

PIN-TIA Devices		
Device Code	Bandwidth	Features
PTINA	155 MBs	3.3V Power Supply, AGC
PTINQ	155 MBs	5V Power Supply, AGC
PTINS	155 MBs	5V Power Supply, No AGC
PTINB	622 MBs	3.3V or 5V Power Supply, AGC
PTINE, PTINZ	1250 MBs	3.3V or 5V Power Supply, AGC
PTINM, PTINO	2500 MBs	3.3V Power Supply, AGC
PTINI	2500 MBs	5V Power Supply, AGC


PTIN15- Series PTIN1.2- Series Receivers for Fiber Optics
 PTIN62- Series PTIN2.5- Series InGaAs PIN w/TIA

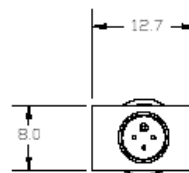
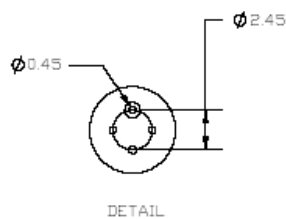
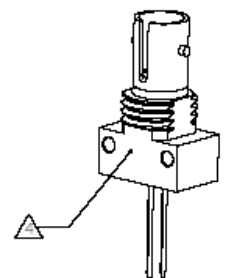
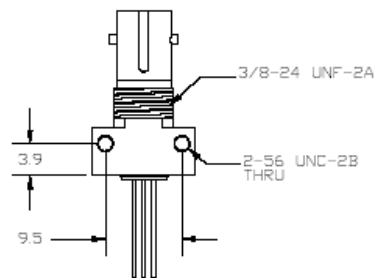
Mechanical Drawing for Fiber Pigtailed PIN-TIA Assemblies



ST Low Profile Receptacle Housing

NOTES:

- 1 THESE DEVICES ARE ESD SENSITIVE. ESD PRECAUTIONS ARE ADVISED.
 - 2 ALL DEVICES ARE SHIPPED WITH ESD LEAD PROTECTORS AND DUST COVERS.
 - 3 ALL DEVICES WILL BE MARKED WITH A PD-LD SERIAL NUMBER.
-  ZINC, DIE CAST
 NICKEL PLATED



Note:
 High Profile ST Receptacle available With 10.4 mm height.

