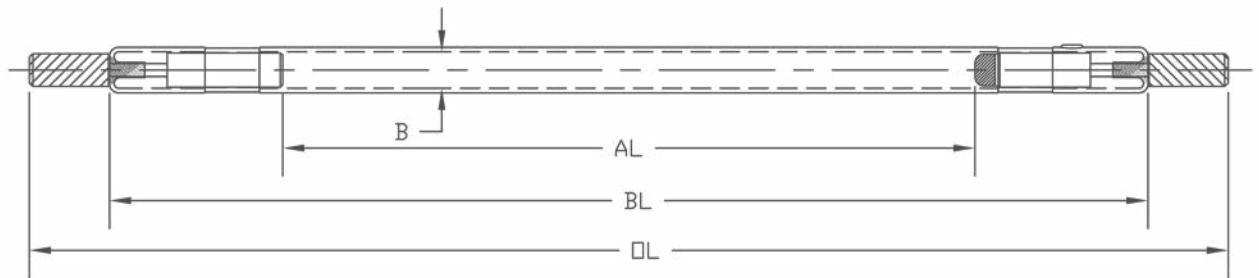


Xenon Flash Lamps

Xenon flash lamps are used to pump pulsed lasers. Typical applications include cutting, drilling, and welding in a number of industrial fields.

LASER COMPONENTS will customize laser lamps, but also has standard replacement lamps available.

The xenon flash lamps are extremely pump efficient and stable, and feature a long lifespan.



AL: arc length

BL: glass body length

OL: total length

B: external diameter

The following operating parameters are necessary for a description of the lamp:

- Pulse data:
Pulse energy, peak voltage, peak current, pulse length, repetition rate, average power
- For simmer operation:
Simmer current and simmer voltage

During simmer operation the gas is kept active. To trigger the pulses therefore requires much less power, which increases the lifespan of the electrodes.

The durability and efficiency of flash lamps are extremely dependent upon the application and the system. For us to help you make the best choice of lamps for your application, simply let us know what that application will be.