



D SCOPE MT

High resolution microscope for Multi-fiber connector

The new D SCOPE MT microscope for MTP/MPO connectors is **the fastest on the market.**

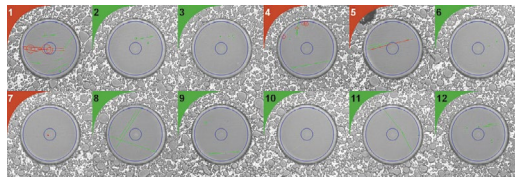
In the same measurement cycle, D Scope MT checks every optical fiber surface condition, and **allows the operator to control the cleanliness of the connector endface and guideholes.**

The fully automatic D SCOPE MT is **the ideal instrument for checking the conformity of connectors to Industry Standards.**

With very high measurement accuracy, D SCOPE MT has been designed for use in **high volume manufacturing environments or the most demanding laboratories.**

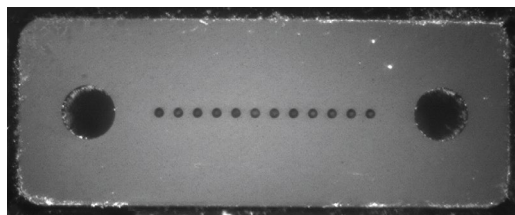
KEY FEATURES :

Testing of PC/APC connectors and ferrules from 1 to 64 fibers
Ultra-fast measurement time
Automatic Pass/Fail defect analysis
Automatic focus adjustment
High resolution optics with defect size detection of 0.5µm
Compliance with Industry Standards as IEC 61300-3-35
Real time full connector endface view
Intuitive Blink software with database connectivity
Compatible with Desktop PC, laptop, tablet PC
USB powered - no external power supply needed



MEASUREMENT TIMES :

CONNECTOR TYPE	FIBER SCREENING ONLY	WITH END FACE VIEW
MT 12	3 sec.	5 sec.
MT 24	5 sec.	7 sec.



SPECIFICATIONS :

Magnification (fiber screening) :	X 400
Defect size detection (µm) :	0.5
Outputs :	USB 3.0 + 2.0
Power source :	12 V
Dimensions H x W x L (mm) :	105 x 230 x 285
Weight (kg) :	6.6

TYPICAL REPORT (FOR MT 12):

Inspection MT report **Sample name: SG MPO 10** 2018-07-13

Device	DScopeMT	Profile:	MT12-PC-Multimode.imt	Custom fields	
serial	4103307489-2	Fiber diameter:	125 µm	Sample name:	SG MPO 10
Camera settings				Operator:	DataPixel
accumulated frames:	1				
exposure time:	20 ms				
gain:	1				
gamma:	1				

FAIL

Fiber	Zone A: Core		Zone B: Cladding		Pass/Fail
	Defects	Scratches	Defects	Scratches	
	Diameter: 25 µm Scratches Allowed: None Defects Allowed: None		Diameter: 112 µm Scratches Allowed: No limit ≤ 3µm None > 3µm Defects Allowed: No limit ≤ 2µm Up to 5 from 2-5µm None > 5µm		
1	2	4	0 ≤ 2µm 2 from 2-5µm 3 > 5µm	5 ≤ 3µm 0 > 3µm	FAIL
2	0	0	0 ≤ 2µm 2 from 2-5µm 0 > 5µm	1 ≤ 3µm 0 > 3µm	PASS
3	0	0	2 ≤ 2µm 2 from 2-5µm 0 > 5µm	0 ≤ 3µm 0 > 3µm	PASS
4	0	0	1 ≤ 2µm 2 from 2-5µm 4 > 5µm	2 ≤ 3µm 0 > 3µm	FAIL
5	0	2	1 ≤ 2µm 1 from 2-5µm 0 > 5µm	2 ≤ 3µm 0 > 3µm	FAIL
6	0	0	2 ≤ 2µm 1 from 2-5µm 0 > 5µm	0 ≤ 3µm 0 > 3µm	PASS
7	1	0	0 ≤ 2µm 0 from 2-5µm 0 > 5µm	0 ≤ 3µm 0 > 3µm	FAIL
8	0	0	1 ≤ 2µm 0 from 2-5µm 0 > 5µm	3 ≤ 3µm 0 > 3µm	PASS
9	0	0	1 ≤ 2µm 1 from 2-5µm 0 > 5µm	1 ≤ 3µm 0 > 3µm	PASS
10	0	0	0 ≤ 2µm 0 from 2-5µm 0 > 5µm	0 ≤ 3µm 0 > 3µm	PASS
11	0	0	0 ≤ 2µm 0 from 2-5µm 0 > 5µm	2 ≤ 3µm 0 > 3µm	PASS
12	0	0	3 ≤ 2µm 1 from 2-5µm 0 > 5µm	2 ≤ 3µm 0 > 3µm	PASS

ORDER OPTIONS:

D Scope MT unit with : - Blink Inspection MT - 2 flanges (MT + MPO 12/24)	71-DSMT-V1-A10-00
Flange MT Male/Female, PC/APC, 12/16/24/32 fibers	30-FL-002181
Flange MPO Male/Female, PC/APC, 12/24 fibers	30-FL-002182
Flange MPO Male/Female, PC/APC, 16/32 fibers	30-FL-002183
Flange Single fiber 1.25 mm PC/APC	30-FL-002314
Flange Single fiber 2.50 mm PC/APC	30-FL-002315