

MACH 6

200 kHz energy meter



KEY FEATURES

- **UP TO 200 kHz PULSE-TO-PULSE**
Measure EVERY pulse, with no sampling, at high rep rates, up to 200 kHz
- **CAPTURE AND STORE UP TO 4 MILLION PULSES**
Store 40 seconds of data at 100 kHz
- **TRACK MISSING PULSES AND PULSES BELOW THRESHOLD**
Know how many pulses were missed or that didn't make the energy threshold with this unique pulse feature
- **SEVERAL HEADS TO CHOOSE FROM**
Silicon, InGaAs and pyroelectric heads for a broad wavelength and energy range
- **ANALOG MODULE AVAILABLE**
Use our fast M6 Detectors with the APM and an oscilloscope for fast analog energy measurements
- **FULL-SPEED USB 2.0 CONNECTION**
Ensures high data rate transfer and fast operation
- **USER-FRIENDLY SOFTWARE WITH MANY DIAGNOSTIC FEATURES**
 - Live mode, strip chart, histogram and statistics displays
 - FFT display of pulse energy data for temporal diagnostics
 - Life test mode to automate laser testing

COMPATIBLE DISPLAYS & PC INTERFACES



MACH 6



APM

ACCESSORIES



Stand with delrin post



Additional 9V power supply



USB cable



APM analog power supply



M6-UV-QED
Relative measurements in UV









Pelican carrying case

MACH 6

Specifications

CE NIST*
Traceable
*Also traceable to NRC-CNRC



	M6-6-SI	M6-6-SI-L	M6-6-IN	M6-6-IN-L	M6-6-PY	M6-12.5-PY
MAX ENERGY*	200 µJ	2 µJ	200 µJ	2 µJ	2 mJ	20 mJ
MAX AVERAGE POWER	5 W	5 W	5 W	5 W	5 W	25 W
MAX REP RATE	200 000 Hz	200 000 Hz	200 000 Hz	200 000 Hz	200 000 Hz	200 000 Hz
EFFECTIVE APERTURE	6 mm Ø	6 mm Ø	6 mm Ø	6 mm Ø	6 mm Ø	12.5 mm Ø
MEASUREMENT CAPABILITY						
Spectral range	0.35 - 1.1 µm	0.35 - 1.1 µm	0.9 - 1.6 µm	0.9 - 1.6 µm	0.35 - 2.5 µm	0.35 - 2.5 µm
Max measurable energy^a	200 µJ	2 µJ	200 µJ	2 µJ	2 mJ	20 mJ
Noise equivalent energy	2 nJ	20 pJ	2 nJ	20 pJ	0.2 µJ	0.2 µJ
Rise time (0-100%)	150 ns	150 ns	150 ns	150 ns	150 ns	150 ns
Max repetition rate	200 000 Hz	200 000 Hz	200 000 Hz	200 000 Hz	200 000 Hz	200 000 Hz
Max pulse width	100 ns	100 ns	100 ns	100 ns	100 ns	100 ns
Calibration uncertainty	± 4%	± 4%	± 4%	± 4%	± 4%	± 4%
Repeatability	± 1%	± 1%	± 1%	± 1%	± 1%	± 1%
DAMAGE THRESHOLDS						
Max average power (60 seconds)	5 W	5 W	5 W	5 W	5 W	25 W
Max energy (at 1064 nm)	200 µJ	2 µJ	200 µJ	2 µJ	20 mJ	20 mJ
PHYSICAL CHARACTERISTICS						
Effective aperture	6 mm Ø	6 mm Ø	6 mm Ø	6 mm Ø	6 mm Ø	12.5 mm Ø
Sensor	Silicon	Silicon	InGaAs	InGaAs	Pyroelectric	Pyroelectric
Dimensions	38.1 Ø x 58.4D mm	38.1 Ø x 58.4D mm	38.1 Ø x 58.4D mm	38.1 Ø x 58.4D mm	38.1 Ø x 58.4D mm	76H x 111W x 76D
Weight (head only)	150 g	150 g	150 g	150 g	150 g	N/A
COMPATIBLE METERS						
PC-based	Mach 6: see detailed specifications on next page					
Analog power supply	APM: see detailed specifications on next page					
ORDERING INFORMATION						
Compatible stand	STAND-D-233	STAND-D-233	STAND-D-233	STAND-D-233	STAND-D-233	STAND-D-233
Product page						

a. Maximum pulse energy reading will vary with wavelength and probe voltage responsivity (Rv). For more details, please read Application Note 121D-201932 and contact us at info@gentec-eo.com

Specifications are subject to change without notice

MACH 6

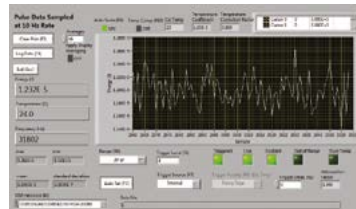
Specifications



MACH 6
(rear view)



APM analog
power supply
(front view)



MACH 6 JOULEMETER

Measure every pulse at up to 200 kHz with MACH 6. Measure with 12-bit digital accuracy and capture up to 4 million pulses in real time. Our MACH 6 joulemeter is the only instrument in the world that performs at this speed, and with this precision. It is designed to support our full complement of fast energy probes that include silicon, InGaAs and pyroelectric detectors. Measure from pJ to mJ and from 0.35 to 2.5 μm . Using the M6-Si detector and the M6-UV-QED accessory, you can make relative measurements at 266 nm.

SPECIFICATIONS & FEATURES

	MACH 6	APM
Compatible detector heads	M6	M6 (with adaptor, P/N C201949), UM-B, QEB, THZ9D and PE detectors
Maximum repetition rate	200 000 Hz	Limited by oscilloscope and detector
Analog output	0 - 3 V	± 4.88 V, BNC
External trigger (TTU)	Optically coupled	None
Internal trigger	2 - 20%	None
Trigger delay	38 - 3825 ns (user-settable)	None
Digital output	USB 2.0	None
Power supply	External, 100/240 VAC 50 - 60 Hz	External, 100/240 VAC 50 - 60 Hz, and 9 V battery (both included)
Product number	202090	201848

INSTRUMENT CONTROL SCREEN

Our powerful LabVIEW application software includes many unique control and diagnostic features. The instrument control screen, shown on the left, is used to set up the operation of the MACH 6, including range, trigger, wavelength, and more. In addition, it is used to set a pulse batch size and to arm the instrument, which starts the data collection. It also gives you access to features like "Autoset", "Call Live Mode", "Run Life Test", "Save Instrument Setup" and the like. These features can be accessed by clicking directly on the feature or pushing the associated function key.

LIVE MODE DISPLAY

The live mode can be accessed from the instrument control screen, or by simply pressing the "F4" function key on your PC. This mode of operation is intended to act like your typical slower digital joulemeter, as it samples the laser pulses at a 10 Hz rate. It provides you with an energy strip chart, live energy reading, statistics and repetition rate. It is a very useful mode when setting up the Mach 6 with your laser. You can select "Auto Set", where the instrument runs through the ranges and trigger levels until it finds the correct range, or set them manually. When setup is complete, you will exit this screen and return to the "Control" screen where you will select a batch size, arm the instrument and start taking pulse energy data.

MACH 6

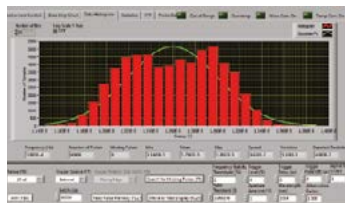
Specifications

CE NIST*
Traceable
*Also traceable to NRC-CNRC



STRIP CHART

The strip chart display provides a quick graphical look at the pulse data batch just collected. The data can be displayed in full scale or in auto scale mode. You can also zoom-in on a portion of the data, like shown in the screen on the left. An ND0.3 filter has been dropped through the beam and you can see the effects on the pulse data collected. You can fit trend and min/max lines to the data. Just below the chart, you will find a complete set of statistics for the batch. At the top of this screen you will see tabs that will take you to the Histogram, Statistics, and FFT (Fast Fourier Transform) displays.



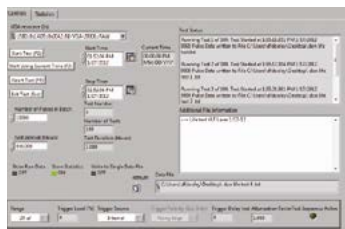
HISTOGRAM

Interested in viewing the statistical distribution of the pulse energy data set? The Histogram screen does this for you and fits a "best Gaussian curve" to the data. It displays complete statistical calculations along the bottom of the graph, along with pulse frequency. Just below the statistics, you will find instrument controls, like range and trigger. You are also given the ability to adjust trigger delay and hold off as needed.



STATISTICS

The statistics display offers a very complete set of useful energy readings and calculated statistics. These include: minimum, maximum, average (mean), standard deviation, spread and variation. Some other very handy features include: windows displaying, average frequency, pulse jitter, pulses below trigger and pulses below threshold (a level set by you). In the screen on the left, you can see that there were 12 pulses below an energy threshold of 3 μW , and 147 missing pulses (or pulses below trigger).



LIFE TEST MODE

Would you like to run a life test on your high repetition rate pulsed laser? How about a periodic test vs. an environmental change like temperature? We have included a great feature to accomplish this. In the life test screen, we give you the ability to select the statistics you want, a start time and date, a stop time and date, the number of pulses and a test interval. You simply identify a file, a place to put the data, and then click on start and walk away! When you come back, you have a data set that tracked the performance of your laser over time, temperature, shock, vibration or anything you chose.