

PL13/15 DFB Series Laser Diode Modules

PD-LD Inc. offers a variety of packaging options for its DFB Series of laser diodes. These units are available in ready-to-use, fiber-coupled packages, including FC, ST, and SC receptacles, as well as fiber-pigtailed units.

The InGaAsP laser diodes offered by PD-LD feature standard wavelengths centered at 1310 and 1550nm. Fiber-coupled CW (continuous-wavelength) output powers range from 0.1 - 2 mW, depending on the fiber type and desired performance level. Tracking error over OTR -40 to +85C is 1.0 dB maximum.



Features

- Internal Monitor Photodetector
- Compact, reliable receptacle & coax fiber-coupled package
- 0.1 - 2.0 mW singlemode (9/125)
- 30dB minimum side mode suppression
- 0.2nsec typical rise/fall time

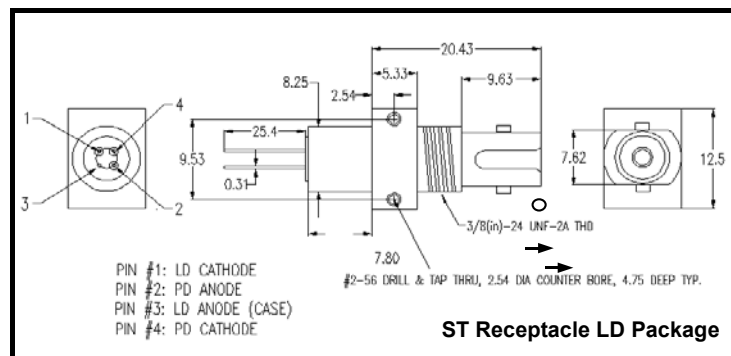
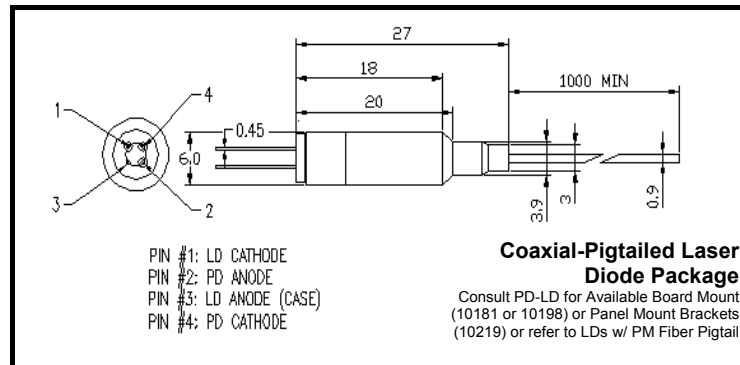
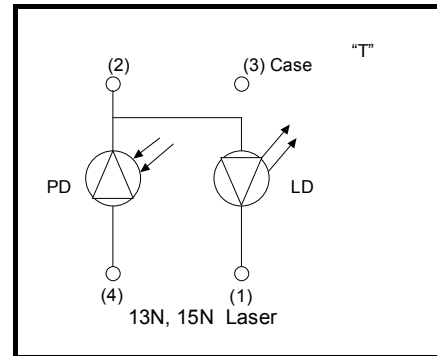
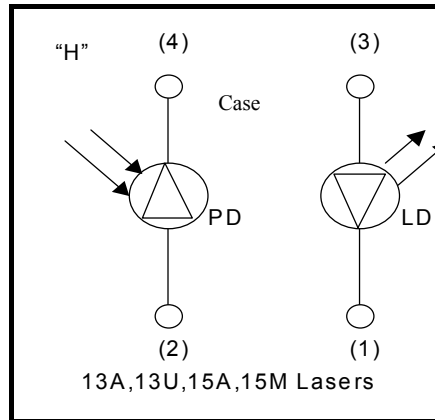
Applications

- Fiberoptic communications systems
- Fiberoptic test instrumentation
- Analog Signal transmission

PD-LD Part No. ¹	Wavelength (nm)			Min. Fiber Coupled Power (mW)	Pin-out	Threshold Current (mA)		Operating Current (mA)		Monitor PD Current (mA)	
	Min.	Typ.	Max.			Typ.	Max.	Typ.	Max.	Min.	Typ.
Continuous Wavelength InGaAsP Lasers @ 25C											
PL13U0021FAE-Q-1-01	1290	1310	1330	2 mW into 9/125 SMF	"H"	6	20	18	40	0.1	0.8
PL13U0.5FC11-S-0	1290	1310	1330	0.5mW FC Receptacle	"H"	6	20	18	40	0.1	0.8
PL13N0021FAA-0-0-01	1295	1310	1325	2 mW into 9/125 SMF	"T"	10	15	20	35	0.1	0.8
PL15M0011SCA-0-0-01	1530	1550	1570	1 mW into 9/125 SMF	"H"	10	30	30	60	0.1	0.8
PL15M0.51SCC-R-0-01	1530	1550	1570	0.5 mW into 9/125 SMF	"H"	15	30	30	45	0.1	0.8
PL15N001T00A-0-0-01	1530	1550	1570	1 mW Into PM fiber	"T"	10	15	20	30	0.1	0.8
PL15N002FC0-0-0-01	1530	1550	1570	2 mW into 9/125 SMF	"T"	10	15	20	30	0.1	0.8

¹Examples only; most device/packaging combinations available. See part numbers on reverse; c contact Sales Dept.

PL13/15 DFB Series Laser Diode Modules



Examples only; most device/packaging combinations available.

Changes to specifications may be made without notice.

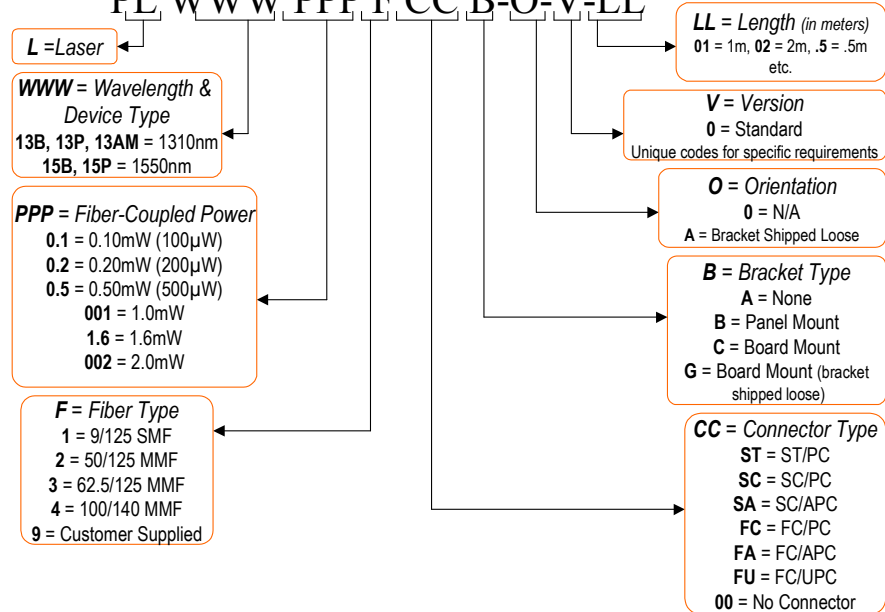
07-03PL13/15DFB.

PL13/15 DFB Series Laser Diode Modules

Ordering Information

Data Legend: Pigtailed Laser Diodes

PL WWW PPP F CC B-O-V-LL



Data Legend: Receptacle Laser Diodes

Ex: PL WWW PPP RRR F-O-V

