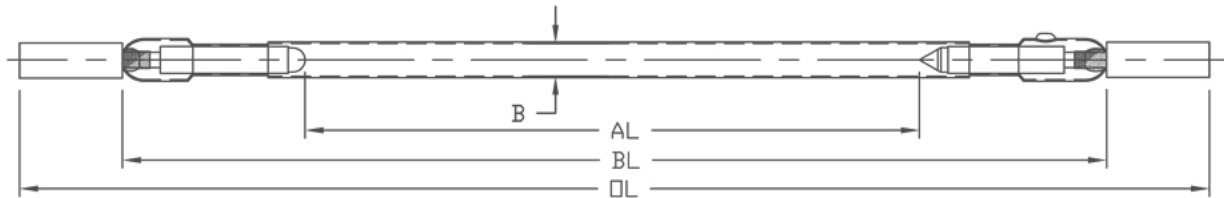


KRYPTON ARC LAMPS



AL: arc length
 BL: glass body length
 OL: total length
 B: external diameter

Krypton arc lamps are typically operated with a constant current source or a constant power supply unit. The application of cw lamps has meanwhile been expanded and now includes modulated and quasi-cw operation. In modulated operation the current varies between a simmer value and a peak value. The duration of the simmer value normally averages a few milliseconds. In quasi-cw operation, the control current is sinusoidal, whereupon the basic frequency is used.

Cw lamps can be found in marking lasers and in lasers used for cutting and welding.

LASER COMPONENTS will customize laser lamps, but also has standard replacement lamps available.

The krypton arc lamps are extremely pump efficient and stable, and feature a long lifespan.

The durability and efficiency of arc lamps are extremely dependent upon the application and the system. For us to help you make the best choice of lamps for your application, simply let us know what that application will be.

