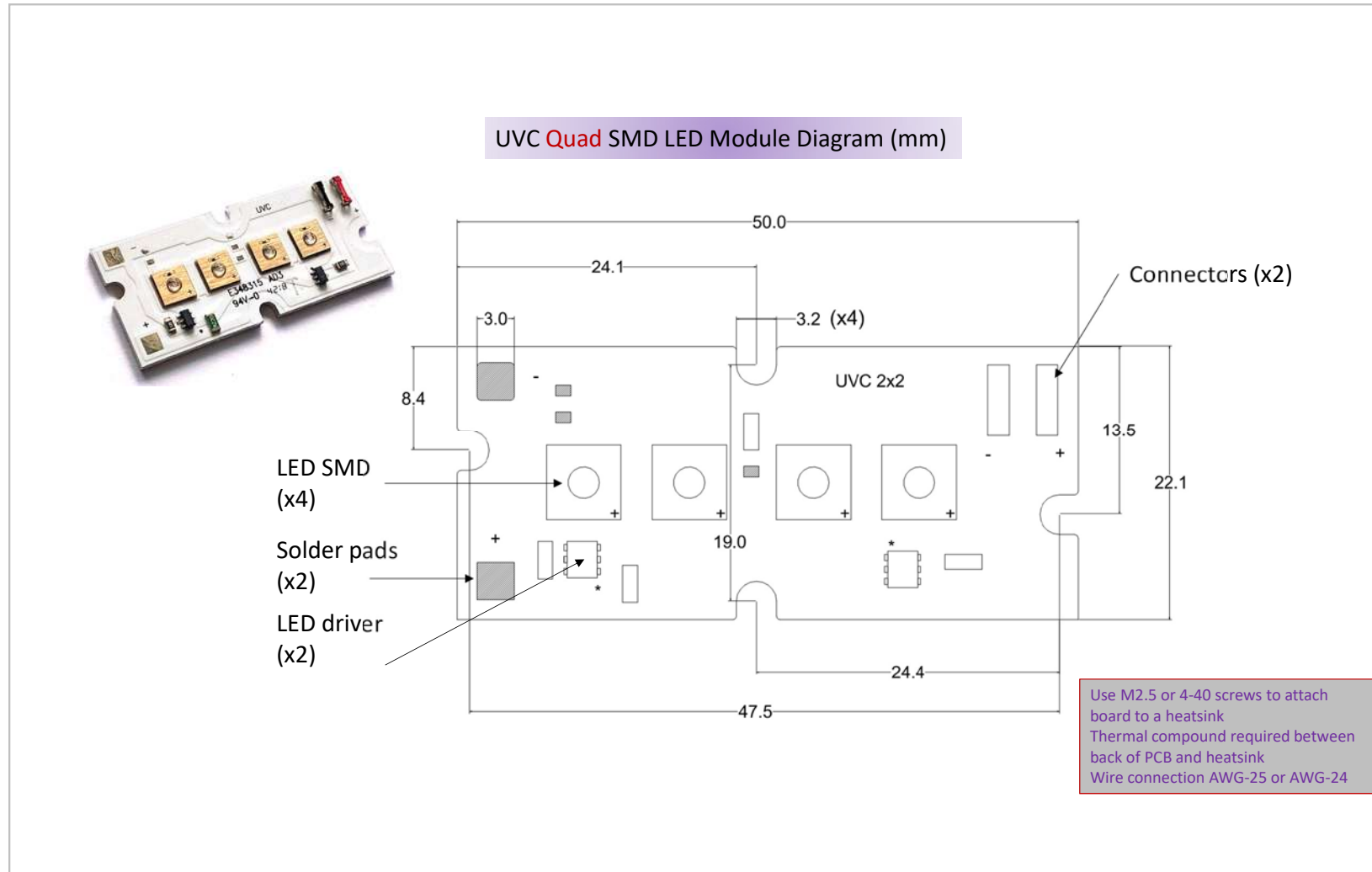
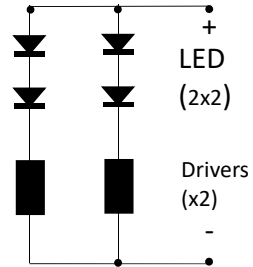


**PLEASE OBSERVE UVC SAFETY PRECAUTIONS
PROTECT YOUR EYS AND SKIN FROM UVC EXPOSURE
ALL OPERATORS, OBSERVERS AND NEARBY PERSONNEL MUST BE PROTECTED**

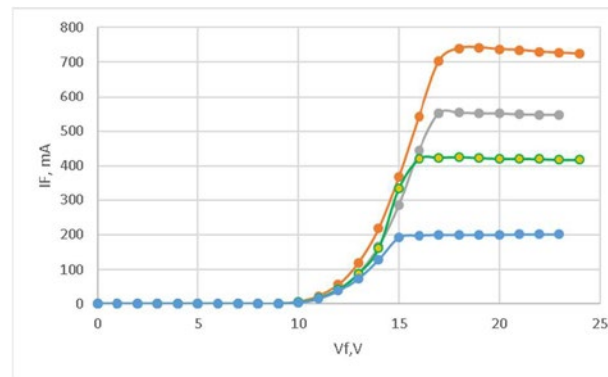




Schematic Electrical Connections
Quad SMD = 2p x 2s



Driver I-V Can Be Set According to Customer Requests



Notes

1. Active liquid cooling required for operation at $\geq 100\text{W}$.
2. Thermal paste required to mount PCB onto heatsink
3. Power supply- 32-40V DC, 3A with voltage stabilization.
4. PCB has 2 connectors (wires AWG-24 or 25) for connection to power supply. No soldering required.
5. Option: a fused silica protective cover

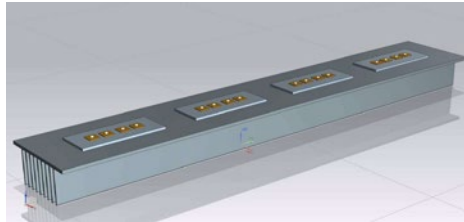
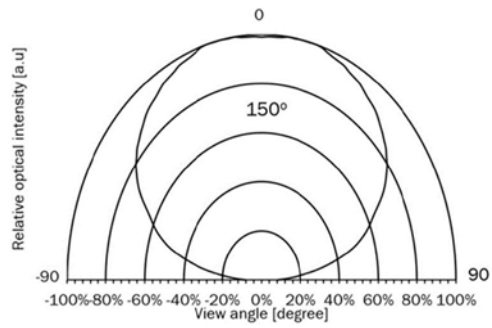
2p x 2s SMD LED Module
Performance at 25°C Ambient and Active Cooling

Standard drive current = 350mA per chip

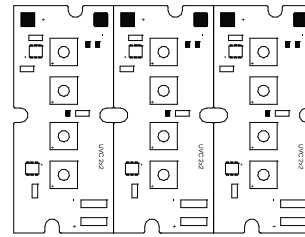
Parameter	Symbol	Unit	Min.	Typ.	Max
Peak Wavelength	λ_p	nm	265	270	275
Radiant Flux	ϕ_e	mW	320*	360*	400*
			450**	500**	600**
Forward Voltage	V _F	V	15	16	19
Forward Current	I _F	A	0.2	0.6	0.7
Spectrum Half Width	$\Delta\lambda$	nm	-	11	-
View Angle	2 $\theta_{\frac{1}{2}}$	°	-	150	-
Thermal Resistance	R _{J-b}	°C/W	-	<10 (TBD)	-

*G1N
** G2H

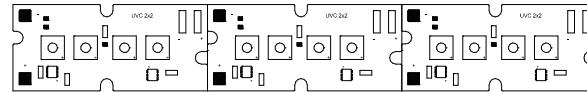
SMD LED Emission Patterns
Broad Emission Angles for Wide-area Coverage



Parallel Assembly



Longitudinal Assembly



Example: Longitudinal Assembly Lamp design (all sizes in mm)

