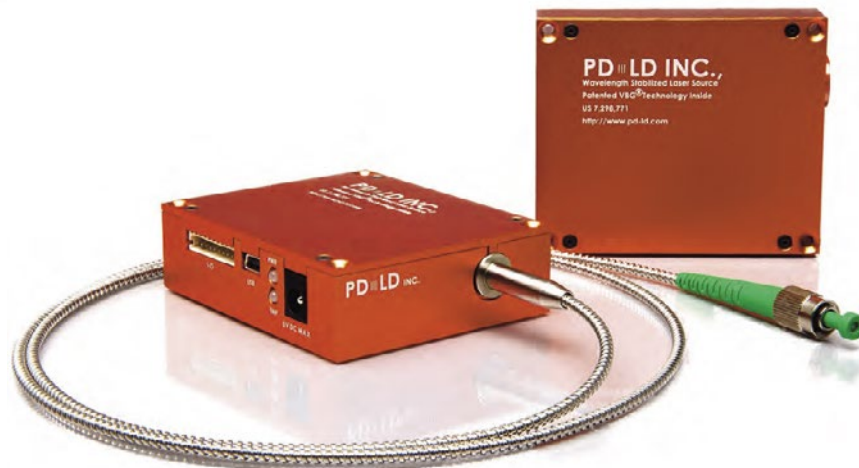


Diode Lasers

SLM Series

SINGLE LONGITUDINAL MODE LASER SERIES



Key Performance Features

- High Power Single Mode Performance
- VBG Wavelength Stability
- Ultra Stable Output Power
- Fully Integrated OEM Solution
- Very Low Power Consumption
- Collimated or Fiber Coupled Output
- User Selectable Control Options
- Compact, One Box Design

Applications

- Raman Spectroscopy
- Flow Cytometry
- Confocal Microscopy
- Metrology
- Fluorescence Excitation
- Interferometry
- Microlithography

Center
Wavelength
(+/- 0.5 nm)

780

785

Diode Lasers

SLM Series

SINGLE LONGITUDINAL MODE LASER SERIES



	Units	Value
Operating Specifications		
Output power*	mW	20-50
Spectral linewidth (typical)	MHz	<50
Wavelength stability (over 8 hours)	pm	+/- 5
ASE suppression (typical)	dB	40
Optical power stability (over 8 hours)	% pk-pk	+/- 1
Noise (10Hz-100MHz)	% rms	0.2
Modulation-analog (typical)	TBD	TBD
Modulation-digital (typical)	kHz	10
Power adjustability		50-100%

*See Ordering Information for Options

	Units	Value
Free Space Optical Specifications		
Beam quality (m ² typical) vertical		1.2
Beam quality (m ² typical) horizontal		1.1
Beam diameter	mm	1
Beam aspect ratio		1.5
Beam divergence—vertical	mrad	0.8
Beam divergence—horizontal	mrad	1.3
Beam pointing stability	μrad	<50
Polarization ratio	linear	100:1

	Units	Value
Electrical Specifications		
DC input (max)		2A @ 3.3V
Warm-up time (typical)	min	<5
Power consumption (typical/max)	W	5
Interface—USB & 10-pin I/O connectors		

	Units	Value
Electrical Specifications		
Case temperature*	°C	15-40
Humidity (non-condensing)	%	5-95

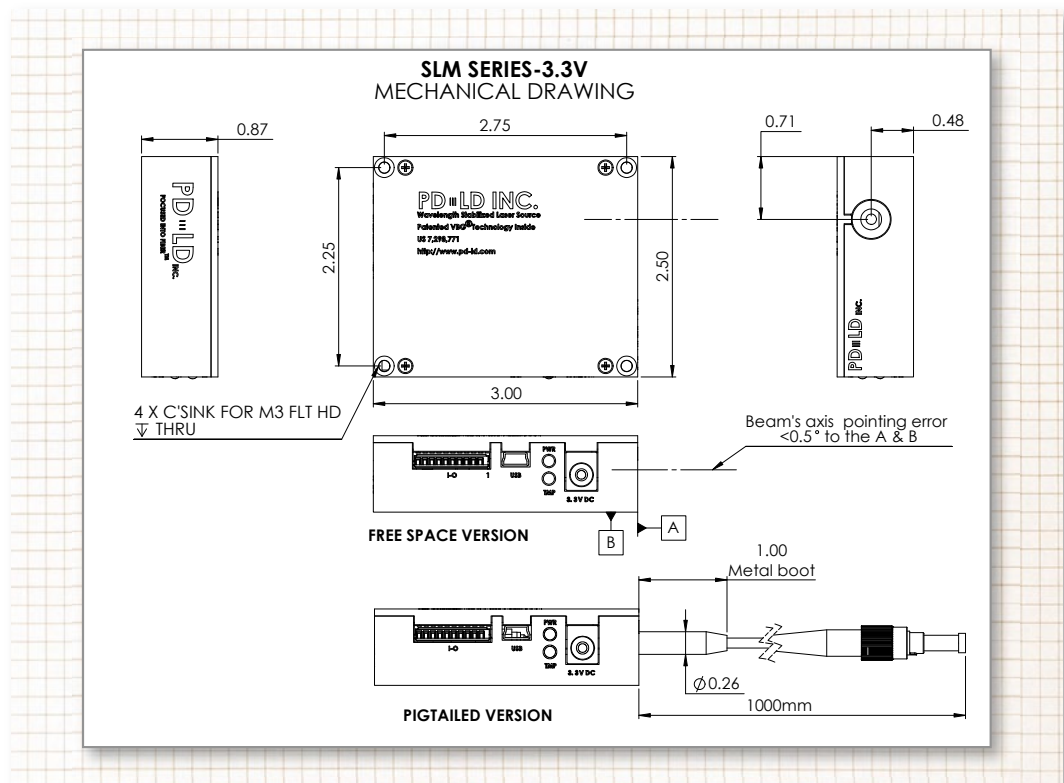
*Must be operated on a heat sink

Diode Lasers

SLM Series

SINGLE LONGITUDINAL MODE LASER SERIES

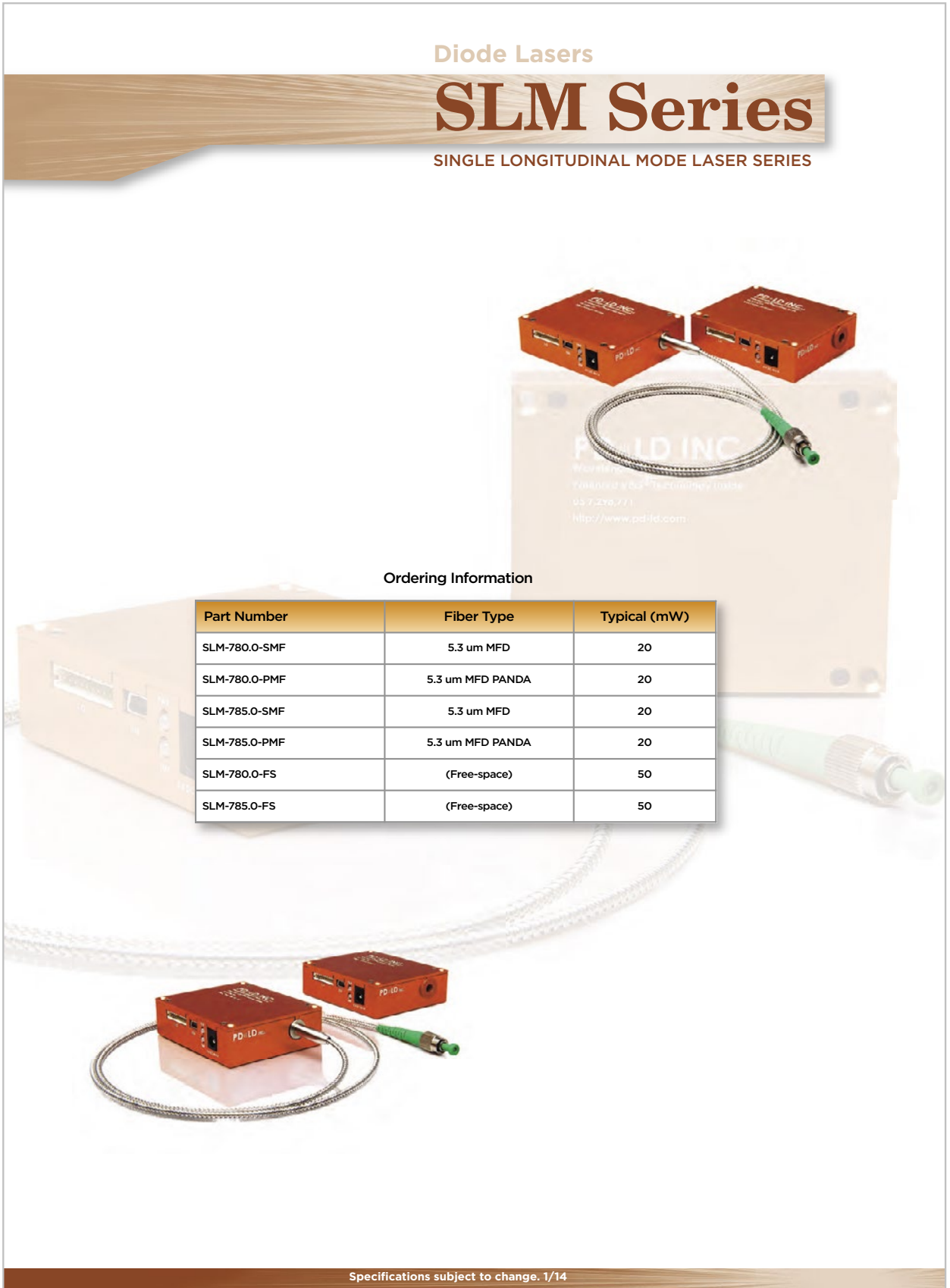
Weight = 135 grams Dimensions = 86cm³ (5.25 in³)



Diode Lasers

SLM Series

SINGLE LONGITUDINAL MODE LASER SERIES



Ordering Information

Part Number	Fiber Type	Typical (mW)
SLM-780.0-SMF	5.3 um MFD	20
SLM-780.0-PMF	5.3 um MFD PANDA	20
SLM-785.0-SMF	5.3 um MFD	20
SLM-785.0-PMF	5.3 um MFD PANDA	20
SLM-780.0-FS	(Free-space)	50
SLM-785.0-FS	(Free-space)	50