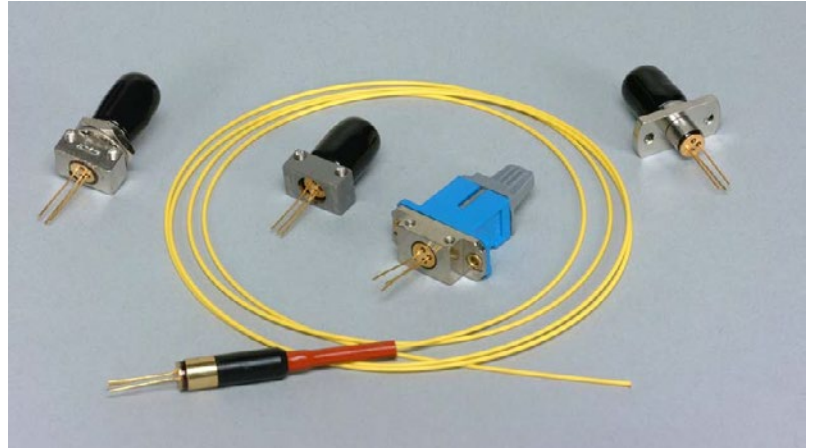


## PS Series 850 nm and 1300 nm Surface Emitting LEDs

PD-LD Inc. offers a variety of standard Surface Emitting LED's (SLEDs) in ready to use fiber coupled packages. Packaging options include Receptacle style housings such as ST, FC and SC as well as fiber pigtailed coaxial assemblies. SLEDs are typically used with multi-mode optical fiber and may be specified for coupling to 50um, 62.5um or 100um core optical fibers. Units built with fiber pigtailed are available terminated with optical connectors. Specialty fiber sizes may be available upon request.

The SLED product offering includes both 850nm and 1310nm devices. These units produce broad spectrum, incoherent light and have wide spectral widths. Such SLED's may be modulated from DC to 150 MHz or operated in continuous wave mode.

These devices may be operated in both analog or digital applications. It is typical to drive the SLED's with up to 100mA forward current. Such devices do not require internal monitor photodiodes which simplifies drive circuit designs. The robust nature of these units allow for operation



### Features 850nm SLEDs

- High reliability GaAlAs Diode
- Compact, robust receptacle & coax fiber-coupled package
- 5 to 30 uW into MMF

### Features 1310nm SLEDs

- InGaAs Diodes systems
- Wide Spectral Width, 160nm
- Ideal for Networking Applications
- DC to 200MHz operation

PD-LD Part Number	Wavelength Typ. (nm)	Operating Cur- rent (mA)		Fiber Type Core/Cladding (um)	Fiber Coupled Power (uW)		Pin- Out	Spectral Width FWHM (nm)	Rise/ Fall Time Max. (nsec)
		Typ.	Max		Min	Typ			
<b>850nm GaAlAs SLED (Iop=100mA @ 25C, 1.8V)</b>									
PS85K020SC22-Q-0	850	100	110	50/125	20	25	D	35	6.0
PS85K035300A-0-0-01	850	100	110	62.5/125	35	40	D	35	6.0
PS85K020ST72-Q-0	850	100	110	50/125	20	25	D	35	6.0
<b>1310nm InGaAs SLED (Iop=100mA @25 C, 1.8V)</b>									
PS13L030300A-0-0-01	1310	100	110	62.5/125	30	35	D	160	3.0
PS13L020SC22-Q-0	1310	100	110	50/125	20	25	D	160	3.0
PS13T020ST72-Q-0	1310	100	110	50/125	20	25	D	160	3.0

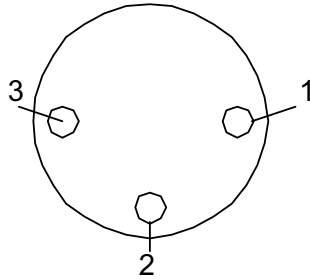
<sup>1</sup>Examples only; most device/package combinations available.

Changes to specifications may be made without notice.

9-08 PS Series.Rev B

## PS Series 850 nm and 1300 nm Surface Emitting LEDs

### SLED PIN-OUT



SLED	
Pin-Out	“85K”, “13L”, “13T”
Pin #1	SLED Anode
Pin #2	SLED Cathode
Pin #3	Case Ground

### Ordering Information

#### Pigtailed Devices

**PXWWWPPPFCCB-0-V-LL**

X = S for SLED

**WWW=Wavelength and Pin-out**

**S85K = 850nm SLED**

**S13L, S13T= 1300nm SLED**

#### Receptacle Devices

**PXWWWPPPRRRF-O-V**

**PPP = Fiber-Coupled Power**

**005 = 5uW    015 = 15uW    0.1 = 0.1mW**

**008 = 8uW    020 = 20uW    0.5 = 0.5mW**

**010 = 10uW    030 = 30uW**

#### F = Fiber Type

**1 = 9/125 SMF**

**2 = 50/125 MMF**

**3 = 62.5/125 MMF**

**4 = 100/140 MMF**

**9 = Customer Supplied**

#### B = Bracket Type

**A = None**

**B = Panel Mount**

**C = Board Mount**

#### RRR=Receptacle Type

**FC1=FC Panel mount**

**FC2=FC Board mount**

**SC1=SC Panel mount only**

**SC2=SCPanel/board mount**

**ST7=ST low profile(7.9mm)**

**ST8=ST high profile(10.4mm)**

#### O=Orientation

**0=N/A**

**A=Bracket Shipped Loose (pigtailed unit)**

**Specify orientation as required**

#### V=Version

**0=Standard**

**Unique Codes for specific requirements**

**LL = Length in meters** (01,02,0.5 ect.) (pigtailed devices only)

**CC = Connector Type** (pigtailed devices only)

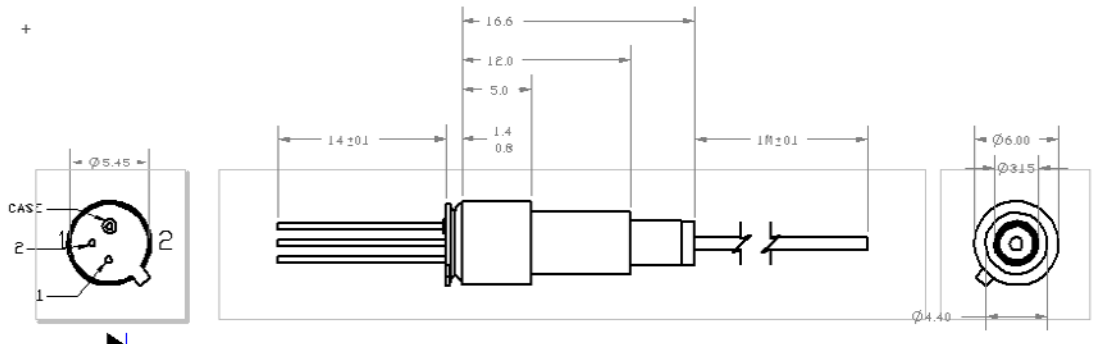
**ST = ST/PC    SC = SCPC    SA=SC/APC    FC = FC/PC    FA = FC/APC    FU = FC/UPC    OO = No Connector**

<sup>1</sup>Examples only; most device/packaging combinations available.

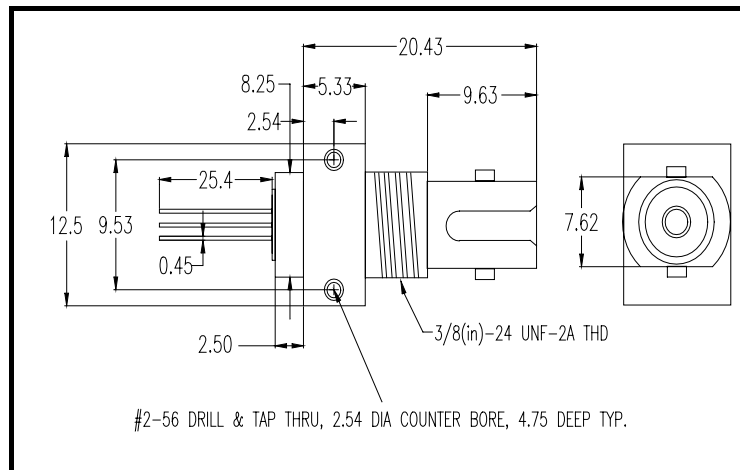
Changes to specifications may be made without notice.

9-08 PS Series.Rev B

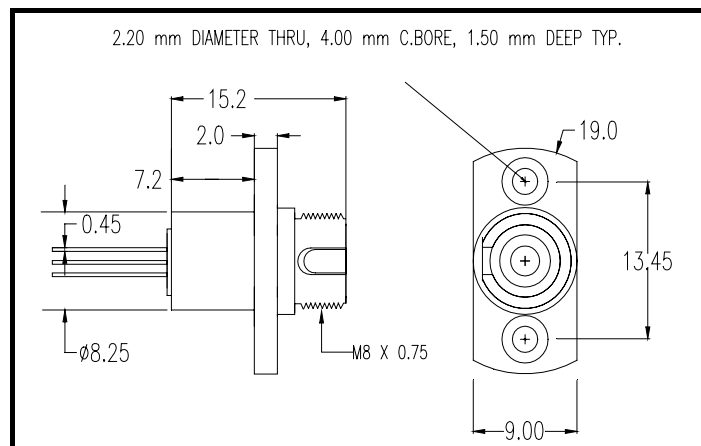
## PS Series 850 nm and 1300 nm Surface Emitting LEDs



### Mechanical Dimensions for Receptacle Packages



**ST Receptacle Height**  
 Low Profile 7.9mm  
 High Profile 10.4mm



<sup>1</sup>Examples only; most device/packaging combinations available.

Changes to specifications may be made without notice.

9-08 PS Series.Rev B


## PS Series 850 nm and 1300 nm Surface Emitting LEDs

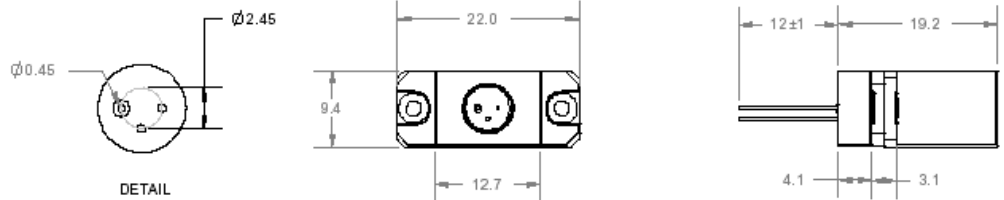
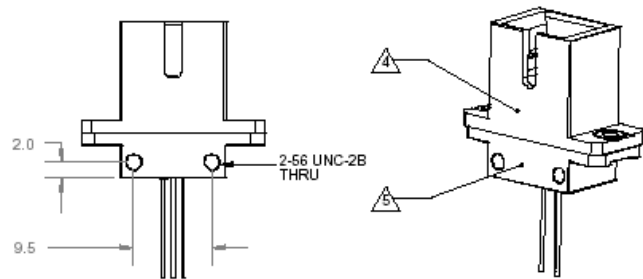
### SC Board Mount Receptacle “Q” Lead Orientation

**NOTES:**

- 1 THESE DEVICES ARE ESD SENSITIVE. ESD PRECAUTIONS ARE ADVISED.
- 2 ALL DEVICES ARE SHIPPED WITH ESD LEAD PROTECTORS AND DUST COVERS.
- 3 ALL DEVICES WILL BE MARKED WITH A PD-LD SERIAL NUMBER.

 PLASTIC, BLUE

 BRASS, NICKEL PLATED



<sup>1</sup>Examples only; most device/packaging combinations available.

Changes to specifications may be made without notice.


9-08 PS Series.Rev B

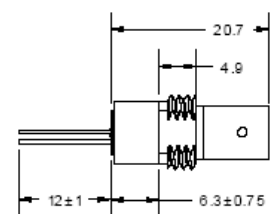
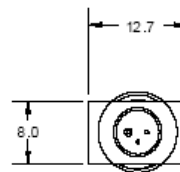
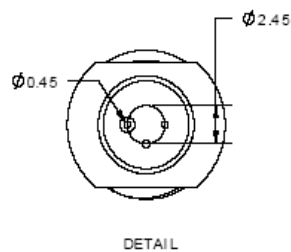
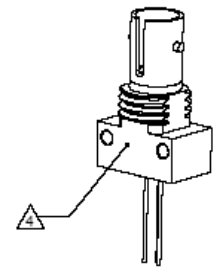
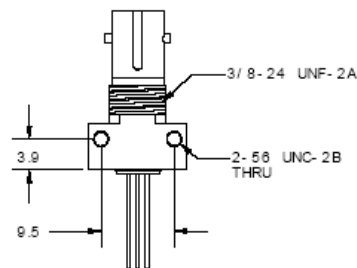
## PS Series 850 nm and 1300 nm Surface Emitting LEDs

### ST Board Mount Receptacle Low Profile with "Q" Lead Orientation

NOTES:

- 1 THESE DEVICES ARE ESD SENSITIVE.  
ESD PRECAUTIONS ARE ADVISED.
- 2 ALL DEVICES ARE SHIPPED WITH ESD LEAD  
PROTECTORS AND DUST COVERS.
- 3 ALL DEVICES WILL BE MARKED  
WITH A PD-LD SERIAL NUMBER.

 ZINC, DIE CAST  
NICKEL PLATED



<sup>1</sup>Examples only; most device/packaging combinations available.

Changes to specifications may be made without notice.

9-08 PS Series.Rev B