

**Datasheet: Necsel™ Yellow SHG FC Laser**

These specifications are for the Necsel yellow SHG fiber-coupled package. The centroid of the wavelength spectrum will be within the indicated wavelength range.



Model #	Symbol	Min. (nm)	Typical (nm)	Max. (nm)
Necsel-SHG-FC-577	$\lambda$	575	577	579

**Operating Wavelengths**

Laser Parameter	Symbol	Min.	Typical	Max.	Unit
Operating Power (CW)	$P_{op}$	0.9	1.0	-	W
Module Operating Temperature [non-condensing atmosphere]	$T_{Thermistor}$	-	30	-	°C
Center Wavelength [at 25°C and $P_{op}$ ]	$\lambda$	575	577	579	nm
Spectral width @ FWHM	$\Delta\lambda$	-	0.2	-	nm
Laser Power Conversion Efficiency	PCE	-	2.5	-	%

**Power Supply Requirements**

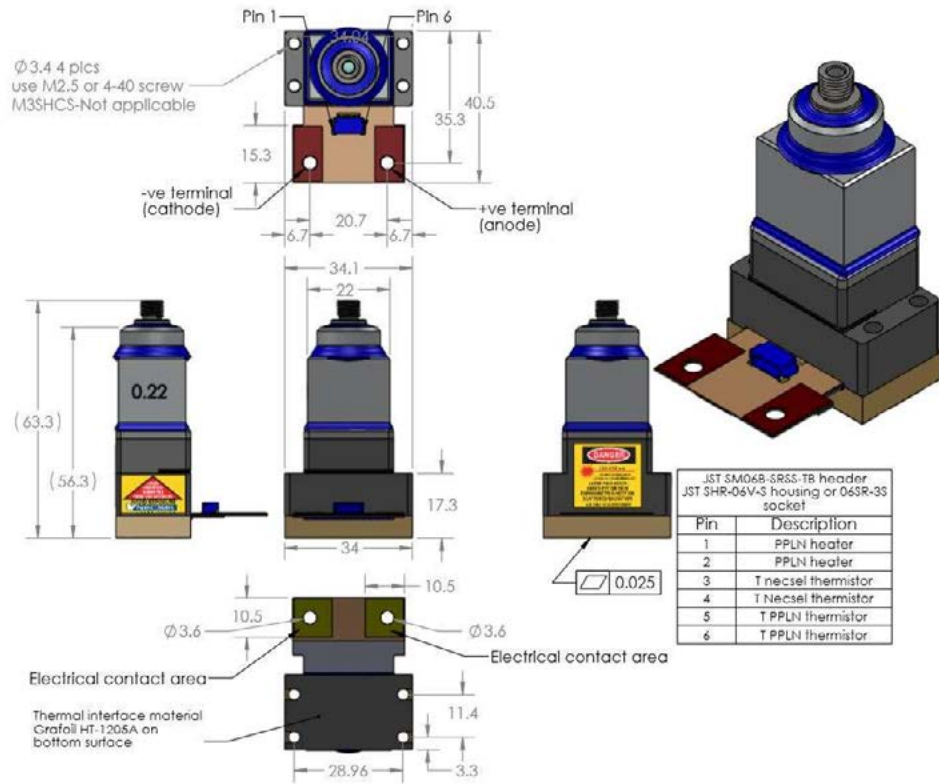
Operating Voltage	$V_{op}$	-	2.5	3.0	V
Operating Current	$I_{op}$	-	15	20	A

**Fiber Specifications**

Fiber Core Diameter (Centration $\leq 10 \mu\text{m}$ )	0.400	mm
Connector Type (Nose length 0.3850 - 0.3863 in., 9.779 – 9.812 mm)	SMA-905	
Numerical Aperture	0.22	

**USHIO**

Outline Drawing and Electrical Connections



Necsel follows a policy of continous product improvement and may change product descriptions and specifications at any time without notice. Necsel offers a limited product warranty to ensure customer satisfaction. Standard terms and conditions can be found on the web at <http://necsel.com/terms-conditions>. This product is solely intended to be integrated into a laser product certified by the Customer. The Customer acknowledges that their product(s) that incorporate Necsel laser products must comply with the applicable regulations before it can be sold.

