

Breath Gas Analysis will be Used in the Future to Detect EPO Doping

IR Spectroscopy Can Help

Erythropoetin (EPO) is a hormone that promotes the development of red blood cells and is primarily produced in the kidneys. Hemoglobin is predominantly located in red blood cells; this red blood pigment binds and transports oxygen and is thus an important indication of endurance. The greater the total hemoglobin mass (tHb) is, the greater the maximum absorption capacity of oxygen $V_{O_2\max}$, and thus endurance, is. Endurance athletes, therefore, strive to achieve particularly high tHb values.

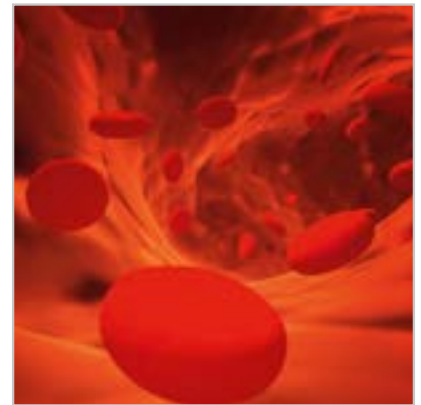
EPO Doping

Synthetically-produced EPO has made headlines as an illegal source of enhancing an athlete's performance. There are now many different ways to consume EPO: in addition to a large variety of preparations, doping can be carried out using one's own blood; this rich variety makes doping difficult to prove.

Today, detection methods are often based on the combined testing of urine and blood samples.

In urine samples, synthetic EPO can be detected within a restricted timeframe; however, some conditions must be met. For example, it is necessary that enzymes not be mixed in with the sample [1].

In a blood passport, an athlete's individual data is compared over time. As central measurement parameters, hemoglobin concentration [Hb], hematocrit (Hct), and the number of reticulocytes can be measured. Abnormal changes can be detected but a direct effect cannot. It is, therefore, necessary to include another parameter in the blood passport: tHb, which does not exhibit any significant changes at sea level, irrespective of one's training cycle. [2]



© istock.com/frentusha

Red erythrocytes floating on an artery

Germany & Other Countries

Laser Components Germany GmbH
Tel: +49 8142 2864 - 0
Fax: +49 8142 2864 - 11
info@lasercomponents.com
www.lasercomponents.com

France

Laser Components S.A.S.
Tel: +33 1 39 59 52 25
Fax: +33 1 39 59 53 50
info@lasercomponents.fr
www.lasercomponents.fr

United Kingdom

Laser Components (UK) Ltd.
Tel: +44 1245 491 499
Fax: +44 1245 491 801
info@lasercomponents.co.uk
www.lasercomponents.co.uk

Nordic Countries

Laser Components Nordic AB
Tel: +46 31 703 71 73
Fax: +46 31 703 71 01
info@lasercomponents.se
www.lasercomponents.se

USA

Laser Components USA, Inc.
Tel: +1 603 821 - 7040
Fax: +1 603 821 - 7041
info@laser-components.com
www.laser-components.com

Method of Determining tHb

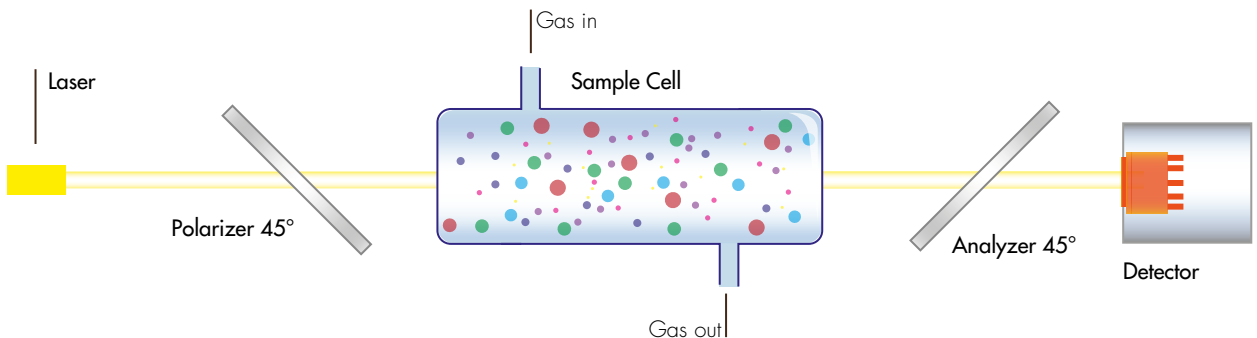
The goal of current research is to establish a practical, non-invasive testing method for determining tHb that neither strains the athlete nor takes a lot of time.

The most widespread measurement method for the determination of tHb is presently Schmidt and Prommer's CO-rebreathing method [3]. This is a breath test in which the athlete must initially inhale an amount of CO that is above a healthy threshold value: this method is too dangerous to serve as a standard, even though it is very accurate.

The company Invivo, Institute for Trace Gas Technology, has been working since 2009 with the World Anti-Doping Agency (WADA) on a method in which ^{15}NO is used as a tracer gas. A completed project has already shown that detection works on a principle level. A follow-up project is currently running with the goal of optimizing this measurement method: a concentration of 20 ppm ^{15}NO should be inhaled for only 4–5 min.; a value of 40–50 min. was previously required. As a comparison: on a well-frequented street, the NO concentration is approximately 1.5 ppm; the threshold value recommended to avoid damage to one's health is 25 ppm.

Measurement Method

Technically speaking, this measurement method is a special infrared measurement: Breath gas labeled with ^{15}NO is tested via Faraday rotation spectroscopy, a special type of dispersion spectroscopy. [4]



Faraday Rotation Spectroscopy

[1] mobil.stern.de/gesundheit/hintergrund-epo-doping-nachweis-und-manipulation-3355706.html

[2] Prommer et al: www.medscape.com/viewarticle/584104

Neue Verfahren basieren auf IR-Gasanalyse

[3] Schmidt, W. and Prommer, N.: The optimised CO rebreathing method:

a new tool to determine total haemoglobin mass routinely. Eur J Appl Physiol 95 (2005) 486-495

[4] R. Gäbler, J. Lehmann. Sensitive and isotope-Selective ($^{14}\text{NO}/^{15}\text{NO}$) Online Detection of Nitric Oxide by Faraday-Laser Magnetic Resonance Spectroscopy.

In: L. Packer, E. Cadenas. Methods in Enzymology, Vol 396, Nitric Oxide, Part E, pp. 54, San Diego, 2005

Components for the Measurement of Gases

Pyroelectric and PbSe Detectors Are Leading Technology

Whether used for breath gas or the surrounding air, gas measurements using NDIR are a classic application for IR detectors. LASER COMPONENTS manufactures detectors with various technologies: Pyroelectric detectors with integrated filters are very widespread. In order to measure gases very quickly or in a particularly small concentration, it is necessary for the detector to be particularly highly sensitive. Here, PbSe detectors are often used. They are also available immediately in a multichannel version.

“The needle in a haystack” is found using laser measurement methods: xInGaAs, InAs, and DLATGS detectors are used for this purpose.



Multi channel pyroelectric detectors

Germany & Other Countries

Laser Components Germany GmbH
Tel: +49 8142 2864 - 0
Fax: +49 8142 2864 - 11
info@lasercomponents.com
www.lasercomponents.com

France

Laser Components S.A.S.
Tel: +33 1 39 59 52 25
Fax: +33 1 39 59 53 50
info@lasercomponents.fr
www.lasercomponents.fr

United Kingdom

Laser Components (UK) Ltd.
Tel: +44 1245 491 499
Fax: +44 1245 491 801
info@lasercomponents.co.uk
www.lasercomponents.co.uk

Nordic Countries

Laser Components Nordic AB
Tel: +46 31 703 71 73
Fax: +46 31 703 71 01
info@lasercomponents.se
www.lasercomponents.se

USA

Laser Components USA, Inc.
Tel: +1 603 821 - 7040
Fax: +1 603 821 - 7041
info@laser-components.com
www.laser-components.com