

Tool Cube™ (TC)

Description

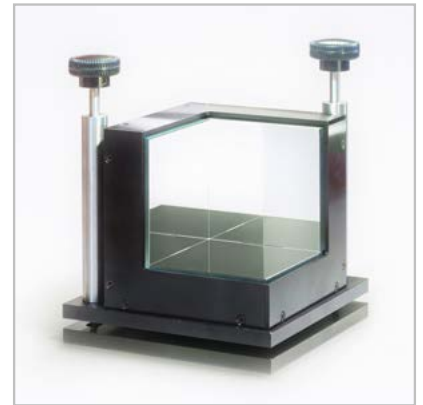
The Tool Cube™ is typically used with two or more lasers or autocollimators to establish orthogonal axes.

Features / Characteristics

The Tool Cube™ is mounted in a housing that includes two adjustment knobs for leveling/aligning the tool cube.

Applications

The Tool Cube™ consists of three front surface mirrors that have been accurately assembled by a proprietary process into a mutually orthogonal inside corner. The PLX Tool Cube™ is designed for setting up optical axis or intuitive alignment of equipment and instruments at right angles to each other or parallel to each other. It has less than 1 arc-second deviation between any two adjacent mirrors.

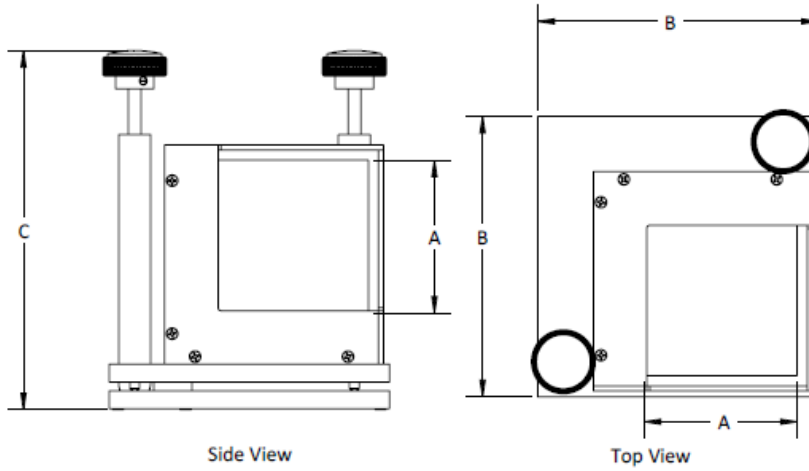


Specifications

Substrate	Pyrex/Aluminum
Surface quality	80-50 Scratch-Dig
Coating	enhanced Aluminum
Wavelength (nm)	400 – 750
Reflectance	93 %

Item	Mirror Size	Weight
TC-30	3" x 3" (76 x 76 mm)	2.6 kg
TC-50	5" x 5" (127 x 127 mm)	5.5 kg

It is available in two sizes, either 3" x 3" mirror faces or 5" x 5" mirror faces. Standard coating for the mirrors is a protected aluminum, customized coatings are also available.

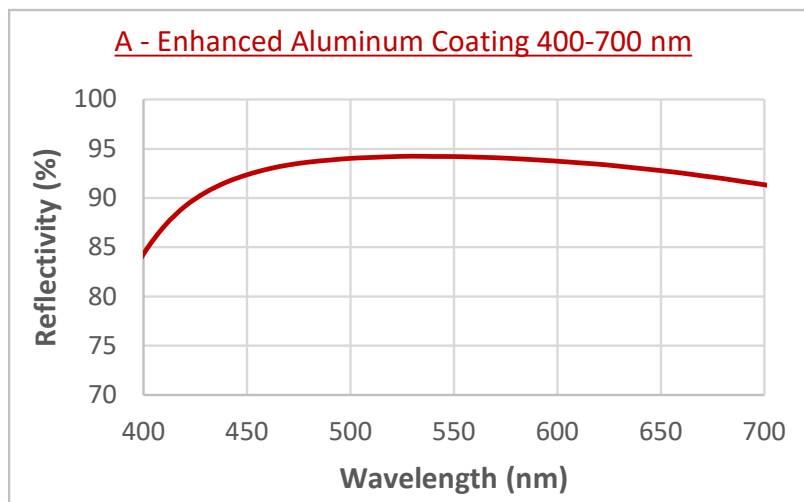


Item	A (in/mm)	B (in/mm)	C (in/mm)
TC-30	3.00/76.20	5.50/139.70	7.04/178.82
TC-50	5.00/127.00	7.75/196.85	9.29/235.97

Simulations

Coating

- Enhanced Aluminum (400 – 700nm) R_{avg} 93% (AOI 55° per surface reflectance average)



Coatings meet R_{avg} requirement, but coating curves are for reference as $R(\lambda)$ may vary $\pm 2\%$ per lot.

Good to know

For inquiries we need to know:

- Mirror size
- Info if another coating is needed (standard is enhanced Aluminum coating)

Product Code



For example:

TC – 30 – EA, Tool Cube, 3" x 3" mirrors, enhanced aluminum coated

(Tool Cube™, with size 3" x 3" mirrors, less than 1 arc second deviation, with enhanced aluminum coating)