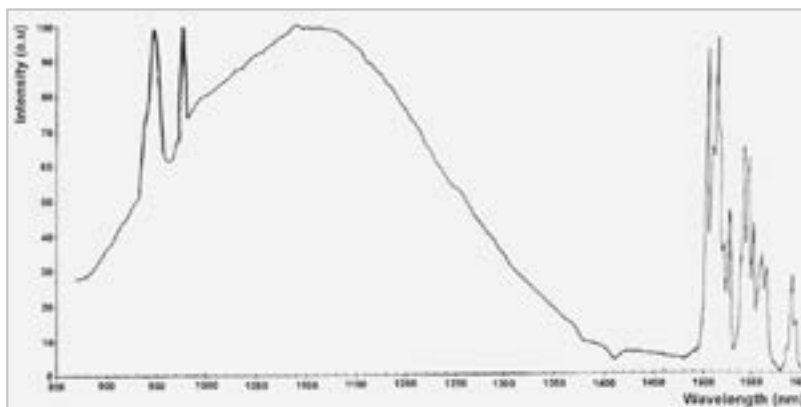


IR-Sensor Card LDT-008TL

Spectral range 800 – 1600 nm

The IR-conversion screen is a unique card. Starting below 800 up to 1600 nm it converts invisible light into visible. It's emission is red (except a incidence of 950 – 980 nm where it emits green). The emission is based on „photon up conversion“ effects. The LDT-008TL does not need to be excited with UV-light. Converting from 1 mW up to 5 W/cm² at 1064 nm (even higher for a short period), it is a very versatile tool for everybody working with lasers in the range of 800 – 1600 nm.

Note: Compared to its predecessor LDT-008R, the LDT-008TL is a little less sensitive. Please ask Laser Components for samples.



Model	LDT-008TL
Excitation range	800 ~ 1600 nm, especially at 950 nm, 980 nm, 1064 nm, 1600 nm
Peak emission	Green (545 nm) @ 950 ~ 980 nm; Red (670 nm) @ 1500 - 1600 nm; Red (650 nm) @ others wavelengths
Base material	PVC ISO card standard format
Dimensions	85 mm x 54 mm
Active size	54 mm x 42 mm (one reflective, two transmissive)
Approx Min IR intensity (daylight)	> 3.0 mW @ 1064 nm
Approx Min IR intensity (darkened room)	> 0.5 mW @ 1064 nm
Approx Maximum IR intensity	5 W/cm ² @ 1064 nm, up to 20 W/cm ² for short period of time

Technical changes reserved.

Germany and Other Countries

Laser Components Germany GmbH
Tel: +49 8142 2864-0
Fax: +49 8142 2864-11
info@lasercomponents.com
www.lasercomponents.com

France

Laser Components S.A.S.
Tel: +33 1 39 59 52 25
Fax: +33 1 39 59 53 50
info@lasercomponents.fr
www.lasercomponents.fr

United Kingdom

Laser Components (UK) Ltd.
Tel: +44 1245 491 499
Fax: +44 1245 491 801
info@lasercomponents.co.uk
www.lasercomponents.co.uk

Nordic Countries

Laser Components Nordic AB
Tel: +46 31 703 71 73
Fax: +46 31 703 71 01
info@lasercomponents.se
www.lasercomponents.se

USA

Laser Components USA, Inc.
Tel: +1 603 821-7040
Fax: +1 603 821-7041
info@laser-components.com
www.laser-components.com